



# **Deluxe System 3 SM, AM, AG Parts Manual 60 Hz Rev. 10/95**

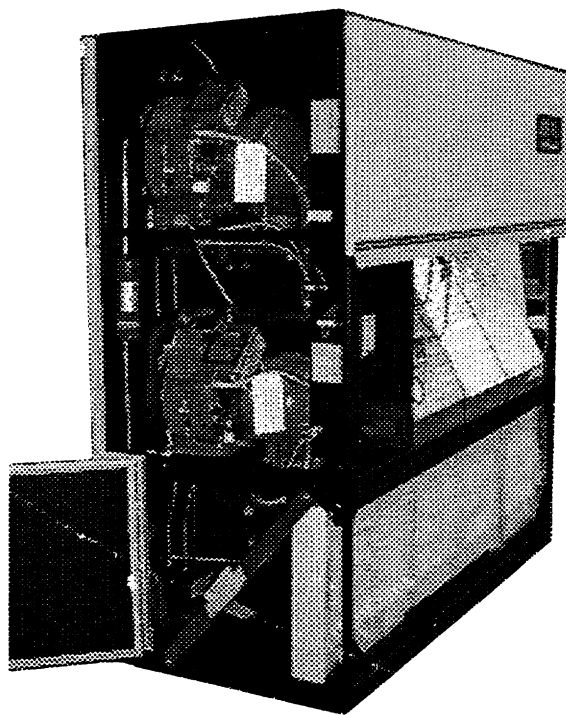
Liebert Corporation may make improvements and/or changes in the products described in the document at any time without notice. Part numbers and technical information are subject to change without prior notice.

Liebert Corporation assumes no responsibility and disclaims all liability for incidental or consequential damages resulting from use of this information from errors or omissions.

## **Deluxe System/3**

6-30 Tons DX and  
Chilled Water  
60 Hz

# PARTS MANUAL



### Model Number Designations

<b>FH</b>	<b>245</b>	<b>A</b>	<b>—</b>	<b>A</b>	<b>AM</b>
FH = Downflow	Nominal capacity in thousand BTU/H	A = Air Cooled	— = 2 Step DX or Std. CW	A = 460/3/60	SM = Standard Microprocessor  AM = Advanced Microprocessor  AG=Advanced Graphics Microprocessor
UH = Upflow		W = Water Cooled	U = 4 Step DX	B = 575/3/60	
FE = Downflow with Econ-o-coil		G = Glycol Cooled	V = VSD CW (Variable Speed Drive)	C = 208/3/60	
UE = Upflow with Econ-o-coil		C = Chilled Water		D = 230/3/60	
				F = 380/3/50	
				G = 415/3/50	
				H = 230/3/50	
				J = 200/3/50	
				U = 400/3/50	

**When ordering parts, have the unit  
Model Number and Serial Number  
available if at all possible.**

---

## Section 1 - 6, 8, and 10 Ton Deluxe System / 3

### 1.1 Main Fans (Blowers) and Motors, DX and CW Models

#### DX Models

FH / FE / UH 075, 114, 125A  
FH / FE / UH 086, 127, 138W  
FH / FE / UH / UE 072, 110, 116G

#### CW Models

FH / UH 147, 200, 248C

#### Blower, DX Models

FN	Models	Description	Part No.	RSP
NS	Upflow	Fan Deck Weldment	F02-2440	
	Downflow	Fan Deck Weldment	F-008A	
1-1	All	Blower	B-0010 (2)	
1-2		Bearing	B-0040 (3)	
1-3		Shaft	B-0020	
1-5		Bushing	B-0080	
1-4		Pulley	B-0540	

#### Blower, CW Models

FN	Models	HP	Description	Part No.	RSP
NS	Upflow	All	Fan Deck Weldment	1D11184G2	
	Downflow		Fan Deck Weldment	1D11149G1	
1-1	All		Blower	1C11154P1	
1-2			Bearing	B-0040 (2)	
1-3			Shaft	1C11153P1	
1-5			Bushing	B-0080	
1-4		2.0	Pulley	B-0540	
1-4		3.0 / 5.0	Pulley	B-0530	

#### Standard Efficiency Motors, DX and CW Models

FN	Models	HP	Volts	Part No.	RSP
1-6	DX	1.0	208 to 460	B-016B	
			575	B-017A	
		1.5	208 to 460	B-019A	
			575	B-020A	
	DX / CW	2.0	208 to 460	B-022A	
			575	B-023A	
		3.0	208 to 460	B-025A	
			575	B-026A	
	CW	5.0	208 to 460	B-028A	
			575	B-029A	

### High Efficiency Motors, DX and CW Models

FN	Models	HP	Volts	Part No.	RSP
1-6	DX	1.0	208 to 460	B-1720	
			575	B-1730	
		1.5	208 to 460	B-1740	
			575	B-1750	
	DX / CW	2.0	208 to 460	B-1760	
			575	B-1770	
		3.0	208 to 460	B-1780	
			575	B-1790	
	CW	5.0	208	B-1880	
			230 / 460	B-1810	

### Standard Blower Drive Package, DX Models

FN	Models	HP	Description	Part No.	RSP
1-7	Upflow	1.0 / 1.5 / 2.0	Belt	B-0600 (2)	
		3.0	Belt	B-1490 (2)	
	Downflow	1.0	Belt	B-0600 (2)	
		1.5 / 2.0 / 3.0	Belt	B-0550 (2)	
1-8	All	1.5 / 2.0 / 3.0	Sheave	B-005B	
		3.0	Sheave	B-069B	

### Standard Blower Drive Package, CW Models

FN	Models	HP	Description	Part No.	RSP
1-7	Upflow	2.0	Belt	B-1690 (2)	
		3.0 / 5.0	Belt	B-060A (2)	
	Downflow	2.0	Belt	B-0600 (2)	
		3.0 / 5.0	Belt	B-0550 (2)	
1-8	All	2.0	Sheave	B-005B	
		3.0 / 5.0	Sheave	B-069B	

Motor Electric Panel Components, DX and CW Models

FN	Models	Volts	HP	Description	Part No.	RSP
NS	SM Controls without Econ-O-Coil and All AM, AG Controls	All	3.0	Contactor, 3 Pole	124501P1	
		208 / 230	5.0	Contactor, 3 Pole	E-0110	
		460 / 575		Contactor, 3 Pole	124501P1	
	SM Controls with Econ-O-Coil Only	All	3.0	Contactor, 3 Pole	124503P1	
		208 / 230	5.0	Contactor, 3 Pole	123273P1	
		460 / 575		Contactor, 3 Pole	124503P1	
	High Efficiency Motors Only			Tri-Block Overload	124547P1	
				Overload Set Point Cover	124548P1	
	All	208 / 230	3.0	Fuse, 15 Amp	E-2070 (3)	
		208 / 230	5.0	Fuse, 25 Amp	E-2080 (3)	
		460 / 575	All	Fuse, 15 Amp	E-2410 (3)	
		208 / 230		Fuseblock, 30 Amp	E-1020	
		460 / 575		Fuseblock, 30 Amp	E-1050	

## 1.2 COMPRESSOR and REFRIGERANT CONTROLS, DX Models Only

6, 8 and 10 Ton

### Compressor, DX Models

FN	Manufacturer	Models	Volts	Part No.	RSP
2-1	Carlyle	6 Ton 2 Step Unloading	208/230	1C16603P1 (2)	
			460	1C16603P2 (2)	
			575	1C16603P3 (2)	
		8 / 10 Ton 2 Step Unloading	208/230	1C16604P1 (2)	
			460	1C16604P2 (2)	
			575	1C16604P3 (2)	
		8 / 10 Ton 4 Step Unloading	208/230	1C18809P1 (2)	
			460	1C18809P2 (2)	
			575	1C18809P3 (2)	
	Copeland	6 Ton	208/230	C-050B (2)	
			460	C-050A (2)	
			575	C-050C (2)	
		8 / 10 Ton	208/230	C-050D (2)	
			460	C-050E (2)	
			575	C-050F (2)	

### Crankcase Heater, DX Models

FN	Manufacturer	Volts	Part No.	RSP
2-2	Carlyle	208 / 230	C06-0010 (2)	
		460	C06-0020 (2)	
		575	C06-0030 (2)	
	Copeland	208 / 230	C05-3010 (2)	
		460	C05-3020 (2)	
		575	C05-3030 (2)	

### Refrigerant Valves, Etc., DX Models

FN	Models	Description	Part No.	RSP
2-3	Fan Speed Control	Pressures Switch (High)	1D15060P1 (2)	
		Pressures Switch (Low)	1D15059P1 (2)	
	Lee-Temp and Water / Glycol	Pressures Switch (High)	1D15060P1(2)	
		Pressures Switch (Low)	1D16206P1(2)	
NS	Carlyle	Muffler	123575P1(2)	
		Compressor Service Valve, Suction Line	C-0910(2)	
		Bracket, Pressure Switch	1C16719P1(2)	
	Copeland	Muffler	1C16401P1(2)	
		Compressor Service Valve, Suction Line	C-0870 (2)	
		Bracket, Pressure Switch	1C16720P1(2)	
	All	Compressor Service Valve, Discharge Line	C-0930 (2)	
		HGBP Valve	P-0180 (2)	
		HGBP Solenoid	P-0080 (2)	
		Sightglass	P-0050 (2)	
		Filter Drier	P-0020 (2)	
		Solenoid, Liquid Line	P-0070 (2)	
		Thermal Expansion Valve	P02-0180 (2)	
	6 Ton	Thermal Expansion Valve	P02-0170 (2)	
	8 / 10 Ton	Thermal Expansion Valve	P02-0170 (2)	

# Compressor Electric Panel Components, DX Models

FN	Models	Volts	Description	Part No.	RSP
NS	All	All	Contactor	123273P1 (2)	
	6 Ton	208 / 230	Fuse, 20 Amp	E-1230 (6)	
	8 / 10 Ton	208 / 230	Fuse, 30 Amp	E-2090 (6)	
	All	460 / 575	Fuse, 15 Amp	E-2410 (6)	
		208 / 230	Fuseblock, 30 Amp	E-1020 (2)	
		460 / 575	Fuseblock, 30 Amp	E-1050 (2)	

## 1.3 HUMIDIFIERS, DX and CW MODELS

6, 8 and 10 Ton

### 1.3.1 INFRARED HUMIDIFIER

#### Lamp / Bulb

FN	Models	Unit Volts	Bulb Volts	Part No.	RSP
3-1	DX	208	208	H-002A (4)	
		230 / 460	240	H-0020 (4)	
		575	600	H-0030 (2)	
	CW	208 / 575	208	H-002A (3)	
		230	240	H-0020 (3)	
		460	277	H13-0010 (3)	

#### Fill Valve, Switches, and Pan

FN	Models	Description	Part No.	RSP
3-2	All	Fill Valve	P-5590	
3-3	DX	Pan	1C13235G4	
	CW	Pan	1C13235G3	
NS	AM, AG Controls	Float Switch	1A18660P1	

#### Electrical Parts, DX

FN	Models	Volts	Description	Part No.	RSP
3-11	All	208 / 460	Reflector	F-601C	
		575	Reflector	F-602C	
3-4		208 / 230	Power Block, End	009-0267 (2)	
3-5			Power Block, Middle	009-0266	
3-4		460	Power Block, End	009-0267 (2)	
3-5			Power Block, Middle	009-0298	
3-6		575	Power Block, Left	009-0264	
3-7			Power Block, Right	009-0263	
3-8		All	Cover End Block	F-6090 (2)	
3-9		208 / 460	Cover Middle Block	F-601D	
NS		208 / 460	Electric Box	F30-0340	
NS		575	Electric Box	F30-0350	
3-10		All	Safety Switch (Top)	R13-0090 (2)	
3-5			Safety Under Pan	H-0450	

#### Electrical Parts, CW

FN	Models	Volts	Description	Part No.	RSP
3-11	All	All	Reflector	F-600C	
3-6, 3-7		208 / 230	Power Block, End	009-0265 (2)	
3-6		460	Power Block, 5 Pos.	009-0265	
3-7			Power Block, 3 Pos.	009-0268	
3-6		575	Power Block, Left	009-0262	
3-7			Power Block, Right	009-0261	
3-8		All	Cover End Block	F-6090 (2)	
NS			Electric Box	1D11407G1	
3-10			Safety Switch (Top)	R13-0090 (2)	
3-5			Safety Under Pan	H-0450	

# Infrared Humidifier Electric Panel Components

FN	Models	Volts	Description	Part No.	RSP
NS	CW	208 to 460	Contactor, 3 Pole	E-0110	
		575	Contactor, 3 Pole	E-011B	
		200 / 208	Fuse, 20 Amp	E-1230 (3)	
		230	Fuse, 15 Amp	E-2070 (3)	
		460 / 575	Fuse, 20 Amp	E-2410 (*)	
	DX	208 to 460	Contactor, 3 Pole	E-0100	
		575	Contactor, 3 Pole	E-011C	
		208	Fuse, 35 Amp	E-1200 (3)	
		230	Fuse, 30 Amp	E-2090 (3)	
		460 / 575	Fuse, 20 Amp	E-2020 (*)	
		208	Fuseblock, 60 Amp	E-1040	
	CW	208	Fuseblock, 30 Amp	E-1020	
	DX	230	Fuseblock, 30 Amp	E-1020	
	All	460	Fuseblock, 30 Amp	E-6030	
		575	Fuseblock, 30 Amp	E-6030	

\*Note: 460V = 3 Fuses, 575V = 2 Fuses

### 1.3.2 STEAM GENERATING HUMIDIFIER

#### Hoses, DX and CW Models

FN	Models	Description	Part No.	RSP
4-5	All	Fill Hose	128755P1	
4-6		Drain Hose	128756P1	
4-7		Overflow Hose	128757P1	

#### Canister, DX and CW Models

FN	Models	Volts	Part No.	RSP
4-1	All	208 / 230	121795P1	
		460 / 575	121795P2	

#### Valves and Controls, DX and CW Models

FN	Models	Volts	Description	Part No.	RSP
4-3	All	All	Drain Valve	128753P1	
4-2			Fill Valve (with strainer)	128754P1	
NS			Strainer Screen	136813P1	
4-4			Canister Full Interface	128751P1	
NS			Run / Drain Switch	121794P1	

#### Printed Circuit Board, DX and CW Models

FN	Models	Volts	Description	Part No.	RSP
NS	All	All	Circuit Board	140654P1	

#### SGH Electric Panel Components, DX and CW Models

FN	Models	Volts	Description	Part No.	RSP
NS	All	All	Contactactor	E-0110	
			Relay	E03-0170	
		208	Fuse, 17.5 Amp	E-2740 (3)	
		230	Fuse, 15 Amp	E-2070 (3)	
		460 / 575	Fuse, 15 Amp	E-2410 (3)	
		208 / 230	Fuseblock, 30 Amp	E-1020	
		460 / 575	Fuseblock, 30 Amp	E-1050	

## 1.4 REHEATS

6, 8, and 10 Ton

### Elements and Safety Stats, DX and CW Models

FN	Models	Volts	Description	Part No.	RSP
5-1	6 Ton DX / 147C	208	Heating Element	1D22307P20 (3)	
		230	Heating Element	1D22307P21 (3)	
		460	Heating Element	1D22307P8 (3)	
		575	Heating Element	1D22307P23 (3)	
	8 / 10 Ton DX 200C / 248C	208	Heating Element	1D22307P24 (3)	
		230	Heating Element	1D22307P25 (3)	
		460	Heating Element	1D22307P3 (3)	
		575	Heating Element	1D22307P10 (3)	
5-2	Upflow	All	Safety Stat	R-013A (2)	
	Downflow	All	Safety Stat	R-0970 (2)	

### Standard Reheats Electric Panel Components, DX and CW Models

FN	Models	Volts	Description	Part No.	RSP
NS	DX	All	Contactors, 2 Pole	E-011A (3)	
			Contactors, 3 Pole	E-0110	
	6 Ton	208 / 230	Fuse, 20 Amp	E-1230 (6)	
	8 / 10 Ton	208	Fuse, 35 Amp	E-1200 (6)	
		230	Fuse, 30 Amp	E-2090 (6)	
	DX	460 / 575	Fuse, 15 Amp	E-2410 (6)	
	CW	All	Contactors, 2 Pole	E-011A (3)	
			Contactors, 3 Pole	E-0110	
	147C	208 / 230	Fuse, 35 Amp	E-1200 (3)	
		460	Fuse, 17.5 Amp	E-2730 (3)	
		575	Fuse, 15 Amp	E-2410 (3)	
	200C / 248C	208 / 230	Fuse, 50 Amp	E-3060 (3)	
		460	Fuse, 30 Amp	E-3050 (3)	
		575	Fuse, 20 Amp	E-2020 (3)	
	147C	208 / 230	Fuseblock, 30 Amp	E-1020 (1)	
		460 / 575	Fuseblock, 30 Amp	E-1050 (1)	
	200C / 248C	208 / 230	Fuseblock, 60 Amp	E-1040 (1)	
		460 / 575	Fuseblock, 30 Amp	E-1050 (1)	
	DX	208 / 230	Fuseblock, 30 Amp	E-1020 (2)	
		460 / 575	Fuseblock, 30 Amp	E-1050 (2)	

### 1.4.1 HOT GAS REHEAT, DX Models

FN	Models	Volts	Description	Part Number	RSP
NS	6 Ton	All	Assembly	008-0430	
	8 / 10 Ton		Assembly	008-0431	
			Check Valve	P-411A	
			Solenoid Valve	P-017B	
	All		Coil	X-0230	

### 1.4.2 STEAM REHEAT, DX and CW Downflow Models

#### Assembly

FN	Models	Description	Part Number	RSP
NS	DX	Assembly	1D13477G1	
	CW	Assembly	1D11814G1	
	DX	Coil	R-014A	
	CW	Coil	R-065A	
	All	2-Way Valve	P-0270	
		Modulating Motor, Spring Return	M-402A	
		Modulating Motor Linkage	M-4050	
		Strainer	R-0520	

### 1.4.3 HOT WATER REHEAT, DX and CW Downflow Models

FN	Models	Description	Part Number	RSP
NS	DX	Assembly, 2-Way Valve	1D13478G1	
		Assembly, 3-Way Valve	1D13479G1	
	CW	Assembly, 2-Way Valve	1D11825G1	
		Assembly, 3-Way Valve	1D11823G1	
	DX	Coil	R-014A	
	CW	Coil	R-065A	
	All	2-Way Valve	P-0270	
		3-Way Valve	P-027A	
		Modulating Motor, Spring Return	M-402A	
		Modulating Motor Linkage	M-4050	
		Strainer	R-0520	

## 1.5 FLUID CONTROLS

6, 8, and 10 Ton

### Water / Glycol Regulation Valve, DX Models

FN	Models	Pressure	Design	Part No.	RSP
6-1	All	Standard	2-Way	131852P1 (2)	
6-2			3-Way	131853P1(2)	
6-1		High	2-Way	P-311A (2)	
6-2			3-Way	P-311B (2)	

### Econ-O-Coil Valve and Actuator, DX Models

FN	Models	Pressure	Design	Part No.	RSP
NS	Econ-O-Coil	Standard	3-Way	123623P2	
		High	3-Way	1C23806P5	
		Standard	Actuator	1C14176P1	
		High	Actuator	1C23803P1	
	Previous Design	Standard	Modulating Motor	M-401A	
		High	Modulating Motor	M-4100	
		All	Modulating Motor Linkage	M-4050	

### Chilled Water Valve and Actuator

FN	Models	Pressure	Design	Part No.	RSP
NS	147C	Standard	2-Way	123622P1	
		High	2-Way	1C23805P3	
		Standard	3-Way	123623P1	
		High	3-Way	1C23806P3	
	200C	Standard	2-Way	123622P4	
		High	2-Way	1C23805P4	
		Standard	3-Way	123623P1	
		High	3-Way	1C23806P4	
	248C	Standard	2-Way	123622P2	
		High	2-Way	1C23805P5	
		Standard	3-Way	123623P2	
		High	3-Way	1C23806P5	
	All	Standard	Actuator	1C14176P1	
		High	Actuator	1C23803P1 <b>p3</b>	
	Previous Design	Standard	Modulating Motor	M-401A	
		High	Modulating Motor	M-4100	
		All	Modulating Motor Linkage	M-4050	

## Evaporator Coils

FN	Models	Design	Part No.	RSP
NS	6 Ton	2 Step	1D10971G1	
		2 Step, Upflow with Econ-O-Coil	1D10957G2	
	8 Ton	2 Step	1D10971G2	
		2 Step, Upflow with Econ-O-Coil	1D10957G2	
		4 Step	1D16583G1	
		4 Step, Upflow with Econ-O-Coil	1D16585G1	
	10 Ton	2 Step	1D10971G3	
		2 Step, Upflow with Econ-O-Coil	1D10957G2	
		4 Step	1D16584G1	
		4 Step, Upflow with Econ-O-Coil	1D16585G1	

## Econ-O-Coil Coils, Downflow Only

FN	Models	Design	Part No.	RSP
NS	All	3 Row	X-0910	
		6 Row	X02-0070	

## Accessories, CW Models

FN	Models	Description	Part No.	RSP
NS	147C	Bypass Valve	1C14431P2	
	200C		1C14431P3	
	248C		1C14431P5	
	Standard Pressure	Flow Switch	P-4120	
	High Pressure	Flow Switch	P-5540	

## Condenser, DX Models (Water / Glycol)

FN	Models	Pressure	Tons	Part No.	RSP
6-3	Water	Standard	6 / 8	J-009G	
		High	8	J-009H	
			10	J-004H	
	Glycol	Standard	6	J-009G	
			8 / 10	J-004G	
		High	6	J-009H	
			8 / 10	J-004H	

## Condensate Pump

FN	Models	Volts	Description	Part No.	RSP
NS	All	208 / 230	Pump	X-015A	
		460	Pump	1C19034P1	
		575	Pump	X-015A	
			Transformer	E05-4600	

## Section 2 - 15 Ton Deluxe System / 3

### 2.1 Main Fans (Blowers) and Motors, DX and CW Models

#### DX Models

FH / FE / UH 199A  
FH / FE / UH 219W  
FH / FE / UH / UE 192G

#### CW Models

FH / UH 302, 376C

#### Blower, DX Models

FN	Models	Description	Part No.	RSP
NS	Upflow	Fan Deck Weldment	F02-2430	
	Downflow	Fan Deck Weldment	F-009C	
1-1	All	Blower	B-0010 (3)	
1-2		Bearing	B-0040 (4)	
1-3		Shaft	B-0030	
1-5		Bushing	B-0080	
1-4	3.0 HP	Pulley	B-0530	
	5.0 HP	Pulley	B-0540	

#### Blower, CW Models

FN	Models	HP	Description	Part No.	RSP
NS	Upflow	All	Fan Deck Weldment	1D16521G1	
	Downflow		Fan Deck Weldment	1D11148G1	
1-1	All		Blower	1C11155P1 (2)	
1-2			Bearing	B-064A (2)	
1-3			Shaft	1C11151P1	
1-5			Bushing	B-1160	
1-4	Downflow	5.0	Pulley	B-0530	
	Upflow, 302C		Pulley	B02-0050	
	Upflow, 376C		Pulley	B-0530	
		All	7.5	Pulley	B-0530

#### Standard Efficiency Motors, DX and CW Models

FN	Models	HP	Volts	Part No.	RSP
1-6	DX	3.0	208 to 460	B-025A	
			575	B-026A	
	DX / CW	5.0	208 to 460	B-028A	
			575	B-029A	
	CW	7.5	208 to 460	B-035A	
			575	B-034A	

### High Efficiency Motors, DX and CW Models

FN	Models	HP	Volts	Part No.	RSP
1-6	DX	3.0	208	B-1780	
			230 / 460	B-1790	
	DX / CW	5.0	208	B-1880	
			230 / 460	B-1810	
	CW	7.5	208	B-1820	
			230 / 460	B-1830	

### Standard Blower Drive Package, DX Models

FN	Models	HP	Description	Part No.	RSP
1-7	All	3.0	Belt	B-060A (2)	
		5.0	Belt	B-1690 (2)	
1-8	All	All	Sheave	B-069B	

### Standard Blower Drive Package, CW Models

FN	Models	HP	Description	Part No.	RSP
1-7	Downflow	5.0	Belt	B-060A (2)	
	Upflow, 302C		Belt	B-0550 (2)	
	Upflow, 376C		Belt	B-060A (2)	
	Downflow	7.5	Belt	B-0550 (2)	
	Upflow		Belt	B-060A (2)	
1-8	All	5.0	Sheave	B-069B	
		7.5	Sheave	B-069A	

### Motor Electric Panel Components, DX and CW Models

FN	Models	Volts	HP	Description	Part No.	RSP
NS	SM Controls without Econ-O-coil and All AM, AG Controls	All	3.0	Contactor, 3 Pole	124501P1	
		208 / 230 460 / 575	5.0	Contactor, 3 Pole	E-0110	
				Contactor, 3 Pole	124501P1	
		All	7.5	Contactor, 3 Pole	E-009F	
	SM Controls with Econ-O-Coil Only	All	3.0	Contactor, 3 Pole	124503P1	
		208 / 230 460 / 575	5.0	Contactor, 3 Pole	123273P1	
				Contactor, 3 Pole	124503P1	
		All	7.5	Contactor, 3 Pole	E-009F	
				Aux. Contact	E-010A	
	High Efficiency Motors Only	All	All	Tri-Block Overload	124547P1	
				Overload Set Point Cover	124548P1	
	All	208 / 230	3.0	Fuse, 15 Amp	E-2070 (3)	
		208 / 230	5.0	Fuse, 25 Amp	E-2080 (3)	
		208 / 230	7.5	Fuse, 35 Amp	E-1200 (3)	
		460 / 575	All	Fuse, 15 Amp	E-2410 (3)	
		208 / 230		Fuseblock, 30 Amp	E-1020	
		460 / 575		Fuseblock, 30 Amp	E-1050	
		208 / 230	7.5	Fuseblock, 60 Amp	E-1040	

## 2.2 COMPRESSOR and REFRIGERANT CONTROLS, DX Models Only

15 Ton

### Compressor, DX Models

FN	Manufacturer	Models	Volts	Part No.	RSP
2-1	Carlyle	2 Step Unloading	208 / 230	1C16605P1 (2)	
			460	1C16605P2 (2)	
			575	1C16605P3 (2)	
		4 Step Unloading	208 / 230	1C18810P1 (2)	
			460	1C18810P2 (2)	
			575	1C18810P3 (2)	
	Copeland	All	208 / 230	1D22600P1	
			460	1D22600P2	
			575	1D22600P3	

### Crankcase Heater, DX Models

FN	Manufacturer	Volts	Part No.	RSP
2-2	Carlyle	208 / 230	C05-0360	
		460	C-0820	
		575	C-0830	

### Refrigerant Valves, Etc., DX Models

FN	Models	Description	Part No.	RSP
2-3	Fan Speed Control	Pressures Switch (High)	1D15060P1 (2)	
		Pressures Switch (Low)	1D15059P1 (2)	
	Lee-Temp and Water / Glycol	Pressures Switch (High)	1D15060P1(2)	
		Pressures Switch (Low)	1D16206P1(2)	
NS	Carlyle	Muffler	1C16401P1	
		Bracket, Pressure Switch	1C16719P1(2)	
	Copeland	Muffler	123575P1(2)	
		Bracket, Pressure Switch	1C16720P1(2)	
	All	Compressor Service Valve, Suction Line	C-0880 (2)	
		Compressor Service Valve, Discharge Line	C-0870 (2)	
		HGBP Valve	P-0190 (2)	
		HGBP Solenoid	P-2870 (2)	
		Sightglass	P-0050 (2)	
		Filter Drier	P-0020 (2)	
		Solenoid, Liquid Line	P-0080 (2)	
		Thermal Expansion Valve	P02-0190 (2)	

### Compressor Electric Panel Components, DX Models

FN	Models	Volts	Description	Part No.	RSP
NS	All	208 / 230	Contactor, 3 Pole	E-0100 (2)	
			Auxiliary Contacts N.O.	E-010A (2)	
			Auxiliary Contacts N.C.	E-010B (2)	
	Crank Heaters Only				
	All	460 / 575	Contactor, 3 Pole	123273P1 (2)	
		208 / 230	Fuse, 50 Amp	E-3060 (6)	
		460 / 575	Fuse, 20 Amp	E-3050 (6)	
		208 / 230	Fuseblock, 60 Amp	E-1040	
		460 / 575	Fuseblock, 30 Amp	E-1050	

## 2.3 HUMIDIFIERS, DX and CW MODELS

15 Ton

### 2.3.1 INFRARED HUMIDIFIER

#### Lamp / Bulb

FN	Models	Unit Volts	Bulb Volts	Part No.	RSP
3-1	DX	208	208	H-002A (4)	
		230/460	240	H-0020 (4)	
		575	600	H-0030 (2)	
	CW	208	208	H-002A (4)	
		230/460	240	H-0020 (4)	
		575	600	H-0030 (2)	

#### Fill Valve, Switches, and Pan

FN	Models	Volts	Description	Part No.	RSP
3-2	All	All	Fill Valve	P-5590	
3-3			Pan	1C13235G4	
NS	AM, AG Controls	All	Float Switch	1A18660P1	

#### Electrical Parts, DX

FN	Models	Volts	Description	Part No.	RSP
3-11	All	208 / 460	Reflector	F-601C	
		575	Reflector	F-602C	
3-4		208 / 230	Power Block, End	009-0267 (2)	
3-5			Power Block, Middle	009-0266	
3-4		460	Power Block, End	009-0267 (2)	
3-5			Power Block, Middle	009-0298	
3-6		575	Power Block, Left	009-0264	
3-7			Power Block, Right	009-0263	
3-8		All	Cover End Block	F-6090 (2)	
3-9		208 / 460	Cover Middle Block	F-601D	
NS		208 / 460	Electric Box	F30-0340	
NS		575	Electric Box	F30-0350	
3-10		All	Safety Switch (Top)	R13-0090 (2)	
3-5			Safety Under Pan	H-0450	

#### Electrical Parts, CW

FN	Models	Volts	Description	Part No.	RSP
3-11	All	All	Reflector	F-601C	
3-4		208 / 460	Power Block, End	009-0267 (2)	
3-5			Power Block, Middle	009-0266	
3-6		575	Power Block, 5 Pos.	009-0298	
3-7			Power Block, 5 Pos.	009-0267 (2)	
3-8		All	Cover End Block	F-6090 (2)	
3-9			Cover Middle Block	F-601D	
NS			Electric Box	1D11408G1	
3-10			Safety Switch (Top)	R13-0090 (2)	
3-5			Safety Under Pan	H-0450	

### Infrared Humidifier Electric Panel Components

FN	Models	Volts	Description	Part No.	RSP
NS	DX	208 to 460	Contactor, 3 Pole	E-0110	
		575	Contactor, 3 Pole	E-011B	
		200 / 208	Fuse, 20 Amp	E-1230 (3)	
		230	Fuse, 15 Amp	E-2070 (3)	
		460 / 575	Fuse, 20 Amp	E-2410 (*)	
	CW	208 to 460	Contactor, 3 Pole	E-0100	
		575	Contactor, 3 Pole	E-011C	
		208	Fuse, 35 Amp	E-1200 (3)	
		230	Fuse, 30 Amp	E-2090 (3)	
		460 / 575	Fuse, 20 Amp	E-2020 (*)	
	DX	208	Fuseblock, 60 Amp	E-1040	
	CW	208	Fuseblock, 30 Amp	E-1020	
	DX	230	Fuseblock, 30 Amp	E-1020	
	All	460	Fuseblock, 30 Amp	E-6030	
		575	Fuseblock, 30 Amp	E-6030	

\*Note: 460V = 3 Fuses, 575V = 2 Fuses

## 2.3.2 STEAM GENERATING HUMIDIFIER

### Hoses, DX and CW Models

FN	Models	Description	Part No.	RSP
4-5	All	Fill Hose	128755P1	
4-6		Drain Hose	128756P1	
4-7		Overflow Hose	128757P1	

### Canister, DX and CW Models

FN	Models	Volts	Part No.	RSP
4-1	All	208 - 230	121795P1	
		460 - 575	121795P2	

### Valves and Controls, DX and CW Models

FN	Models	Volts	Description	Part No.	RSP
4-3	All	All	Drain Valve	128754P1	
4-2			Fill Valve (with strainer)	128753P1	
NS			Strainer Screen	136813P1	
4-4			Canister Full Interface	128751P1	
NS			Run / Drain Switch	121794P1	

### Printed Circuit Board, DX and CW Models

FN	Models	Volts	Description	Part No.	RSP
NS	All	All	Circuit Board	140654P1	

### SGH Electric Panel Components, DX and CW Models

FN	Models	Volts	Description	Part No.	RSP
NS	All	208	Contactor	E-009F	
		230 / 460 / 575	Contactor	E-0110	
		All	Relay	E03-0170	
		208	Fuse, 35 Amp	E-1200 (3)	
		230	Fuse, 30 Amp	E-2090 (3)	
		460 / 575	Fuse, 15 Amp	E-2410 (3)	
		208	Fuseblock, 60 Amp	E-1040	
		230	Fuseblock, 30 Amp	E-1020	
		460 / 575	Fuseblock, 30 Amp	E-1050	

## 2.4 REHEATS

15 Ton

### Elements and Safety Stats, DX and CW Models

FN	Models	Volts	Description	Part No.	RSP
5-1	DX, 376C	208	Heating Element	1D22307P32 (3)	
		230	Heating Element	1D22307P33 (3)	
		460	Heating Element	1D22307P6 (3)	
		575	Heating Element	1D22307P7 (3)	
	302C	208	Heating Element	1D22307P22 (3)	
		230	Heating Element	1D22307P28 (3)	
		460	Heating Element	1D22307P30 (3)	
		575	Heating Element	1D22307P31 (3)	
5-2	Upflow	All	Safety Stat	R-013A (2)	
	Downflow	All	Safety Stat	R-0970 (2)	

### Standard Reheats Electric Panel Components, DX and CW Models

FN	Models	Volts	Description	Part No.	RSP
NS	DX	208 / 230	Contactor, 2 Pole (RH)	E-011C (3)	
		460 / 575	Contactor, 2 Pole (RH)	E-011A (3)	
		208 / 230	Contactor, 3 Pole (BR)	E-0100	
		460 / 575	Contactor, 3 Pole (BR)	E-0110	
		208 / 230	Fuse, 60 Amp	E-1160 (6)	
		460	Fuse, 25Amp	E-3060 (6)	
		575	Fuse, 20 Amp	E-3050 (6)	
	302C	208 / 230	Contactor, 2 Pole (RH)	E-011B (3)	
	376C	208 / 230	Contactor, 2 Pole (RH)	E-011C (3)	
	302C / 376C	460 / 575	Contactor, 2 Pole (RH)	E-011A (3)	
	302C	208 / 230	Contactor, 3 Pole (BR)	E-009F	
	376C	208 / 230	Contactor, 3 Pole (BR)	E-0100	
	302C / 376C	460 / 575	Contactor, 3 Pole (BR)	E-0110	
	302C	208 / 230	Fuse, 40 Amp	E-2100 (6)	
		460	Fuse, 20 Amp	E-2730 (3)	
		575	Fuse, 15 Amp	E-2410 (6)	
	376C	208	Fuse, 60 Amp	E-3060 (6)	
		230	Fuse, 50 Amp	E-3050 (6)	
		460	Fuse, 25 Amp	E-3050 (6)	
		575	Fuse, 20 Amp	E-2020 (6)	
	All	208 / 230	Fuseblock, 60 Amp	E-1040 (2)	
		460 / 575	Fuseblock, 30 Amp	E-1050 (2)	

## 2.4.1 HOT GAS REHEAT, DX Models

FN	Models	Volts	Description	Part Number	RSP
NS	All	All	Assembly	008-0432	
			Check Valve	P-411A	
	All		Solenoid Valve	P-017B	
			Coil	X-0240	

## 2.4.2 STEAM REHEAT, DX and CW Downflow Models

### Assembly

FN	Models	Volts	Description	Part Number	RSP
NS	DX	All	Assembly	1D13477G1	
	302C		Assembly	1D11397G1	
	376C		Assembly	1D11397G3	
	All		Coil	R-014A	
	302C / 376C		2-Way Valve	P-0270	
	DX		2-Way Valve	P-0280	
	All		Modulating Motor, Spring Return	M-402A	
			Modulating Motor Linkage	M-4050	
			Strainer	R-0520	

## 2.4.3 HOT WATER REHEAT, DX and CW Downflow Models

FN	Models	Volts	Description	Part Number	RSP
NS	DX	All	Assembly, 2-Way Valve	1D13478G2	
			Assembly, 3-Way Valve	1D13479G2	
			Coil	R-016A	
	CW		Assembly, 2-Way Valve	1D11824G1	
			Assembly, 3-Way Valve	1D11822G1	
			Coil	R-014A	
	All		Modulating Motor, Spring Return	M-402A	
			Modulating Motor Linkage	M-4050	
			Strainer	R-0520	

## 2.5 FLUID CONTROLS

15 Ton

### Water / Glycol Regulation Valve, DX Models

FN	Models	Pressure	Design	Part No.	RSP
6-1	All	Standard	2-Way	131852P1 (2)	
6-2			3-Way	131853P1 (2)	
6-1		High	2-Way	P-311A (2)	
6-2			3-Way	P-311B (2)	

### Econ-O-Coil Valve and Actuator, DX Models

FN	Models	Pressure	Design	Part No.	RSP
NS	Econ-O-Coil	Standard	3-Way	P-4390	
		High	3-Way	1C23806P6	
		Standard	Actuator	1C14176P1	
		High	Actuator	1C23803P3	
	Previous Design	Standard	Modulating Motor	M-401A	
		High	Modulating Motor	M-4100	
		All	Modulating Motor Linkage	M-4050	

### Chilled Water Valve and Actuator

FN	Models	Pressure	Design	Part No.	RSP
NS	302C	Standard	2-Way	123622P2	
		High	2-Way	1C23805P5	
		Standard	3-Way	123623P2	
		High	3-Way	1C23806P5	
	376C	Standard	2-Way	123622P3	
		High	2-Way	1C23805P6	
		Standard	3-Way	123623P3	
		High	3-Way	1C23806P6	
	All	Standard	Actuator	1C14176P1	
		High	Actuator	1C23803P3	
	Previous Design	Standard	Modulating Motor	M-401A	
		High	Modulating Motor	M-4100	
		All	Modulating Motor Linkage	M-4050	

### Evaporator Coils

FN	Models	Design	Part No.	RSP
NS	All	2 Step	006-0011	102-0190
		2 Step, Upflow with Econ-O-Coil	006-0369	102-0220
		4 Step	1D16582G1	102-0190
		4 Step, Upflow with Econ-O-Coil	1D16585G2	102-0190

### Econ-O-Coil Coils, Downflow Only

FN	Models	Design	Part No.	RSP
NS	All	3 Row	X-0920	
		6 Row	X02-0080	

### Accessories, CW Models

FN	Models	Description	Part No.	RSP
NS	302C	Bypass Valve	1C14431P2	
	376C		1C14431P3	
	Standard Pressure	Flow Switch	P-4120	
	High Pressure	Flow Switch	P-5540	

### Condenser, DX Models (Water / Glycol)

FN	Models	Pressure	Part No.	RSP
6-3	Water	Standard	J-004G (2)	
	Glycol	Standard	J-009H (2)	
	All	High	J-002H (2)	

### Condensate Pump

FN	Models	Volts	Description	Part No.	RSP
NS	All	208 / 230	Pump	X-015A	
		460	Pump	1C19034P1	
		575	Pump	X-015A	
	DX		Transformer	021-1218	
	CW		Transformer	1D17798G2	

## Section 3 - 20 / 22 / 30 Ton Deluxe System / 3

### 3.1 Main Fans (Blowers) and Motors, DX and CW Models

#### DX Models

FH / FE / UH 245 290 380A  
 FH / FE / UH 267 315 412W  
 FH / FE / UH / UE 240 265 363G

#### CW Models

FH / UH 422, 529C  
 FH 600, 740C

#### Blower, DX Models

FN	Models		H.P.	Description	Part No.	RSP
1-1	20, 22 Ton	Upflow / Downflow	5.0 / 7.5	Blower	B-1170 (2)	
1-2				Bearing	B-064A (2)	
1-3				Shaft	B-1140	
1-4				Pulley	B-0530	
1-5				Bushing	B-1160	
NS		Upflow		Fan Deck Weldment	F20-1360	
		Downflow		Fan Deck Weldment	F-009D	
1-1	30 Ton	Downflow	10.0	Blower	B02-0210 (3)	
1-2				Bearing	B05-0200 (2)	
1-3				Shaft	125425P1	
1-4				Pulley	B02-0050	
1-5				Bushing	1A23547P1	
NS				Fan Deck Weldment	125462G1	

#### Blower, CW Models

FN	Models		HP	Description	Part No.	RSP
1-1	422C, 529C	Upflow / Downflow	All	Blower	B-1170 (2)	
1-2				Bearing	B-064A (2)	
1-3				Shaft	B-1140	
1-4			7.5	Pulley	B-0530	
1-5				Bushing	B-1160	
1-4		Upflow / Downflow	10.0	Pulley	B02-0050	
1-5				Bushing	1A23547P1	
NS				Fan Deck Weldment	F20-1360	
				Fan Deck Weldment	1D11143G1	
1-1	600C, 740C		All	Blower	B02-0210 (3)	
NS				Fan Deck Weldment	134750G1	
1-2				Bearing	B05-0200 (2)	
1-3				Shaft	125425P1	

### 600C Blower Pulley and Bushings

FN	Models	HP	Description	Part No.	RSP
1-4	With Inverter	10.0	Pulley	B-0710	
1-5			Bushing	1A23547P1	
1-4	W/O Inverter	10.0	Pulley	B-067A	
1-5			Bushing	1A23547P1	
1-4		Hi. Eff.	Pulley	136132P1	
1-5			Bushing	136133P1	
1-4		15.0	Pulley	136132P2	
1-5			Bushing	136133P1	

### 740C Blower Pulley and Bushings

FN	Models	HP	Description	Part No.	RSP
1-4	With Inverter	10.0	Pulley	B-067A	
1-5			Bushing	1A23547P1	
1-4		15.0	Pulley	136132P2	
1-5			Bushing	136133P1	
1-4	W/O Inverter	10.0	Pulley	B-0700	
1-5			Bushing	1A23547P1	
1-5		Hi. Eff.	Bushing	136133P1	
1-4			Pulley	136132P3	
1-5		15.0	Bushing	B02-0090	

### Standard Efficiency Motors, DX and CW Models

FN	Models	HP	Volts	Part No.	RSP
1-6	DX	5.0	208 to 460	B-028A	
			575	B-029A	
	DX / CW	7.5	208 to 460	B-035A	
			575	B-034A	
	DX / CW	10.0	208 to 460	B05-006B	
			575	B02-010A	
	CW	15.0	208	B05-008A	
			230 / 460	B05-0080	
			575	B02-0130	

### High Efficiency Motors, DX and CW Models

FN	Models	HP	Volts	Part No.	RSP
1-6	DX	5.0	208	B-1880	
			230 / 460	B-1810	
	DX / CW	7.5	208	B-1820	
			230 / 460	B-1830	
	CW	10.0	208	B-1840	
			230 / 460	B-1850	
			575	B02-0100	
		15.0	208	136173P1	
			230 / 460	136174P1	
			575	136175P1	

### Standard Blower Drive Package, DX Models

FN	Models	HP	Description	Part No.	RSP
1-7	All	5.0 / 10.0	Belt	B-0550 (2)	
	Upflow	7.5	Belt	B-060A (2)	
	Downflow		Belt	B-0570 (2)	
1-8	All	5.0	Sheave	B-069B	
		7.5 / 10.0	Sheave	B-069A	

### Standard Blower Drive Package, CW Models

FN	Models	HP	Description	Part No.	RSP
1-7	Upflow	7.5	Belt	B-060A (2)	
	Downflow		Belt	B-0550 (2)	
1-8	All		Sheave	B-069B	
1-7	All	10.0	Belt	B-0550 (2)	
1-8			Sheave	B-069A	

### 600C Standard Blower Drive Package

FN	Models	HP	Description	Part No.	RSP
1-7	With Inverter	10.0	Belt	136131P6 (2)	
1-8			Pulley	B-054A	
NS			Bushing	1A32397P4	
1-7	W/O Inverter	10.0 Hi. Eff.	Belt	136131P7 (2)	
1-7			Belt	136131P1 (2)	
1-8			Sheave	B-0870	
1-7		15.0	Belt	136131P2 (2)	
1-8			Sheave	136147P3	

### 740C Standard Blower Drive Package

FN	Models	HP	Description	Part No.	RSP
1-7	With Inverter	10.0	Belt	136131P8 (2)	
1-8			Pulley	B-054A	
NS			Bushing	1A32397P4	
1-7		15.0	Belt	136131P2 (2)	
1-8			Pulley	136132P8	
NS			Bushing	136133P3	
1-7	W/O Inverter	10.0	Belt	136131P10 (2)	
1-8			Sheave	136147P2	
1-7		15.0	Belt	136131P3 (2)	
1-8			Sheave	136147P4	

# Motors Electric Panel Components, DX and CW Models

FN	Models	Volts	HP	Description	Part No.	RSP
NS	SM Controls without Econ-O-coil and All AM, AG Controls	208 / 230	5.0	Contactor, 3 Pole	E-0110	
		460 / 575		Contactor, 3 Pole	124501P1	
		All	7.5	Contactor, 3 Pole	E-009F	
	All	208 / 230	10.0	Contactor, 3 Pole	E-0100	
		460 / 575		Contactor, 3 Pole	E-009F	
		208 / 230	15.0	Contactor, 3 Pole	E-2500	
		460 / 575		Contactor, 3 Pole	E-009F	
	SM Controls with Econ-O-Coil Only	208 / 230	5.0	Contactor, 3 Pole	123273P1	
		460 / 575		Contactor, 3 Pole	124503P1	
		All	7.5	Contactor, 3 Pole	E-009F	
		All	All	Aux. Contact	E-010A	
	High Efficiency Motors Only	All	All	Tri-Block Overload	124547P1	
				Overload Set Point Cover	124548P1	
		208 / 230	15.0	Tri-Block Overload	E-3800	
				Tri-Block Cover	E-4010	
	All	208 / 230	5.0	Fuse, 25 Amp	E-2080 (3)	
		208 / 230	7.5	Fuse, 35 Amp	E-1200 (3)	
		460 / 575	5.0, 7.5	Fuse, 15 Amp	E-2410 (3)	
		208 / 230	10.0	Fuse, 45 Amp	E-6050 (3)	
		460		Fuse, 20 Amps	E-2020 (3)	
		575		Fuse, 17.5 Amps	E-2730 (3)	
		208 / 230	15.0	Fuse, 70 Amps	E-116A (3)	
		460		Fuse, 35 Amps	E-2021 (3)	
		575		Fuse, 25 Amps	E-3050 (3)	
		208 / 230	5.0, 7.5, 10.0	Fuseblock, 30 Amp	E-1020	
				Fuseblock, 60 Amp	E-1040	
				Fuseblock, 100 Amp	E-1041	
		460 / 575	5.0 Thru 10.0	Fuseblock, 30 Amp	E-1050	
		460	15.0	Fuseblock, 60 Amp	E-105A	
		575		Fuseblock, 30 Amp	E-1050	

### 3.2 COMPRESSOR and REFRIGERANT CONTROLS, DX Models Only

20, 22, 30 Ton

#### Compressor, 20 Ton DX Models

FN	Manufacturer	Models	Volts	Part No.	RSP
2-1	Carlyle	2 Step Unloading	208 / 230	1C16606P1 (2)	
			460	1C16606P2 (2)	
			575	1C16606P3 (2)	
		4 Step Unloading	208 / 230	1C18811P1 (2)	
			460	1C18811P2 (2)	
			575	1C18811P3 (2)	
	Copeland	2 Step Unloading	208 / 230	1C17631P1 (2)	
			460	1C17631P2 (2)	
			575	1C17631P3 (2)	

#### Compressor, 22 Ton DX Models

FN	Manufacturer	Models	Volts	Part No.	RSP
2-1	Carlyle	2 Step Unloading	208 / 230	1C16607P1 (2)	
			460	1C16607P2 (2)	
			575	1C16607P3 (2)	
		4 Step Unloading	208 / 230	1C18812P1 (2)	
			460	1C18812P2 (2)	
			575	1C18812P3 (2)	
	Copeland	2 Step Unloading	208 / 230	1C16385P1 (2)	
			460	1C16385P2 (2)	
			575	1C16385P3 (2)	

#### Compressor, 30 Ton DX Models

FN	Manufacturer	Models	Volts	Part No.	RSP
2-1	Carlyle	2 Step Unloading	208 / 230	1C18259P1 (2)	
			460	1C18259P2 (2)	
			575	1C18259P3 (2)	
		4 Step Unloading	208 / 230	125680P1 (2)	
			460	125680P2 (2)	
			575	125680P3 (2)	

#### Crankcase Heater, DX Models

FN	Manufacturer	Volts	Part No.	RSP
2-2	Carlyle	208 / 230	C05-0360 (2)	
		460	C-0820 (2)	
		575	C-0830 (2)	
	Copeland	208 / 230	C05-3100 (2)	
		460	C05-3110 (2)	
		575	C05-3120 (2)	

### Refrigerant Valves, Etc., DX Models

FN	Models	Description	Part No.	RSP
2-3	Fan Speed Control	Pressures Switch (High)	1D15060P1 (2)	
		Pressures Switch (Low)	1D15059P1 (2)	
	Lee-Temp and Water / Glycol	Pressures Switch (High)	1D15060P1(2)	
		Pressures Switch (Low)	1D16206P1(2)	
NS	Carlyle	Muffler	1C16401P1	
		Bracket, Pressure Switch	1C16719P1(2)	
	Copeland	Muffler	123575P1	
		Bracket, Pressure Switch	1C16720P1(2)	
	Carlyle	Compressor Service Valve, Suction Line	C-0890 (2)	
		Compressor Service Valve, Suction Line	1A18898P1 (2)	
	Copeland	Compressor Service Valve, Suction Line	C-080W (2)	
	Carlyle	Compressor Service Valve, Discharge Line	C-0880 (2)	
	Copeland	Compressor Service Valve, Discharge Line	C-080K (2)	
	All	HGBP Valve	P-018A (2)	
		HGBP Solenoid	P-287A (2)	
		Sightglass	P-2880	
		Filter Drier	P-2890	
		Solenoid, Liquid Line	P-2870	
	20 Ton	Thermal Expansion Valve	P02-0220 (2)	
	22 Ton	Thermal Expansion Valve	P02-0210 (2)	
	30 Ton	Thermal Expansion Valve	130992P2 (2)	

### Compressor Electric Panel Components, 20 Ton DX Models

FN	Models	Volts	Description	Part No.	RSP
NS	All	208 / 230	Contactor, 3 Pole	E-2500 (2)	
		460 / 575	Contactor, 3 Pole	123273P1 (2)	
			Auxilliary Contacts N.O.	E-010A (2)	
			Auxilliary Contacts N.C.	E-010B (2)	
	Crank Heaters Only				
	All	208 / 230	Fuse, 60 Amp	E-1160 (6)	
		460 / 575	Fuse, 30 Amp	E-1100 (6)	
		208 / 230	Fuseblock, 60 Amp	E-1040	
		460 / 575	Fuseblock, 30 Amp	E-1050	

### Compressor Electric Panel Components, 22 Ton DX Models

FN	Models	Volts	Description	Part No.	RSP
NS	All	208 / 230	Contactor, 3 Pole	E-009H (2)	
		460 / 575	Contactor, 3 Pole	123273P1 (2)	
			Auxilliary Contacts N.O.	E-010A (2)	
			Auxilliary Contacts N.C.	E-010B (2)	
	Crank Heaters Only				
	All	208 / 230	Fuse, 80 Amp	E-116A (6)	
		460 / 575	Fuse, 35 Amp	E-2021(6)	
		208 / 230	Fuseblock, 100 Amp	E-1041	
		460 / 575	Fuseblock, 60 Amp	E-105A	

# Compressor Electric Panel Components, 30 Ton DX Models

FN	Models	Volts	Description	Part No.	RSP
NS	All	208 / 230	Contactora, 3 Pole	E-009H (2)	
		460 / 575	Contactora, 3 Pole	E-009F(2)	
	Crank Heaters Only	All	Auxilliary Contacts N.O.	E-010A (2)	
			Auxilliary Contacts N.C.	E-010B (2)	
	All	208 / 230	Fuse, 100 Amp	E-1120 (6)	
		460 / 575	Fuse, 45 Amp	E05-3810 (6)	
		208 / 230	Fuseblock, 100 Amp	E-1041	
		460 / 575	Fuseblock, 60 Amp	E-105A	

### 3.3 HUMIDIFIERS, DX and CW MODELS

20, 22, 30 Ton

#### 3.3.1 INFRARED HUMIDIFIER

##### Lamp / Bulb

FN	Models	Unit Volts	Bulb Volts	Part No.	DX Qty.	CW Qty.	RSP
3-1	All	208	208	H-002A	(6)	(4)	
		230	240	H-0020	(6)	(4)	
		460	277	H13-0010	(6)	(4)	
		575	600	H-0030	(3)	(3)	

##### Fill Valve, Switches, and Pan

FN	Models	Volts	Description	Part No.	RSP
3-2	All	All	Fill Valve	P-5590	
3-3			Pan	1C13235G4	
NS	AM, AG Controls	All	Float Switch	1A18660P1	

##### Electrical Parts, DX

FN	Models	Volts	Description	Part No.	RSP
3-11	All	208 / 460	Reflector	F-601C	
		575	Reflector	F-602C	
3-4		208 / 230	Power Block, End	009-0265 (2)	
3-5			Power Block, Middle	009-0297	
3-4		460	Power Block, End	009-0265 (2)	
3-5			Power Block, Middle	009-0299	
3-6		575	Power Block, Left	009-0262	
3-7			Power Block, Right	009-0261	
3-8		All	Cover End Block	F-6090 (2)	
3-9		208 / 460	Cover Middle Block	F-601D	
NS		208 / 460	Electric Box	F30-0340	
NS		575	Electric Box	F30-0350	
3-10		All	Safety Switch (Top)	R13-0090 (2)	
3-5			Safety Under Pan	H-0450	

##### Electrical Parts, CW

FN	Models	Volts	Description	Part No.	RSP
3-11	All	All	Reflector	F-600C	
3-4		208 / 230	Power Block, End	009-0265 (2)	
3-5			Power Block, Middle	009-0297	
3-4		460	Power Block, End	009-0265 (2)	
3-5			Power Block, Middle	009-0299	
3-6		575	Power Block, Left	009-0262	
3-7			Power Block, Right	009-0261	
3-8		All	Cover End Block	F-6090 (2)	
3-9		208 / 460	Cover Middle Block	F-601D	
NS		208 / 460	Electric Box	1D11408G1	
NS		575	Electric Box	1D11406G1	
3-10		All	Safety Switch (Top)	R13-0090 (2)	
3-5			Safety Under Pan	H-0450	

# Infrared Humidifier Electric Panel Components

FN	Models	Volts	Description	Part No.	RSP
NS	All	All	Contactor, 3 Pole	E-0100	
		208	Fuse, 35 Amp	E-1200 (3)	
		230	Fuse, 30 Amp	E-2090 (3)	
		460	Fuse, 17.5 Amp	E-2730 (3)	
		575	Fuse, 15 Amp	E-2410 (3)	
		208	Fuseblock, 60 Amp	E-1040	
		230	Fuseblock, 30 Amp	E-1020	
		460 / 575	Fuseblock, 30 Amp	E-1050	

### 3.3.2 STEAM GENERATING HUMIDIFIER

#### Hoses, DX and CW Models

FN	Models	Description	Part No.	RSP
4-5	All	Fill Hose	128755P1	
4-6		Drain Hose	128756P1	
4-7		Overflow Hose	128757P1	

#### Canister, DX and CW Models

FN	Models	Volts	Part No.	RSP
4-1	All	208 - 230	121795P1	
		460 - 575	121795P2	
	600C, 740C	208 to 460	136799P1	

#### Valves and Controls, DX and CW Models

FN	Models	Volts	Description	Part No.	RSP
4-3	All	All	Drain Valve	128754P1	
4-2			Fill Valve (with strainer)	128753P1	
NS			Strainer Screen	136813P1	
4-4			Canister Full Interface	128751P1	
NS			Run / Drain Switch	121794P1	
4-3	600C, 740C		Drain Valve	127992P1	
4-2			Fill Valve (with strainer)	136812P1	
NS			Strainer Screen	136813P1	
4-4			Canister Full Interface	136956P1	

#### Printed Circuit Board, DX and CW Models

FN	Models	Volts	Description	Part No.	RSP
NS	All	All	Circuit Board	140654P1	

#### SGH Electric Panel Components, DX and CW Models

FN	Models	Volts	Description	Part No.	RSP
NS	All	208	Contactor	E-009F	
		230 / 460 / 575	Contactor	E-0110	
		All	Relay	E03-0170	
		208	Fuse, 35 Amp	E-1200 (3)	
		230	Fuse, 30 Amp	E-2090 (3)	
		460 / 575	Fuse, 15 Amp	E-2410 (3)	
		208	Fuseblock, 60 Amp	E-1040	
		230	Fuseblock, 30 Amp	E-1020	
		460 / 575	Fuseblock, 30 Amp	E-1050	

### 3.4 REHEATS

20, 22, 30 Ton

#### Elements and Safety Stats, DX and CW Models

FN	Models	Volts	Description	Part No.	RSP
5-1	All	208	Heating Element	1D22307P35 (3)	
		230	Heating Element	1D22307P36 (3)	
		460	Heating Element	1D22307P1 (3)	
		575	Heating Element	1D22307P2 (3)	
5-2	Upflow	All	Safety Stat	R-013A (2)	
	Downflow	All	Safety Stat	R-0970 (2)	

#### Standard Reheats Electric Panel Components, DX and CW Models

FN	Models	Volts	Description	Part No.	RSP
NS	All	208 / 230	Contactor, 2 pole (RH)	E-011C (3)	
		460 / 575	Contactor, 2 pole (RH)	E-011A (3)	
		208 / 230	Contactor, 3 pole (BR)	E-0100 (3)	
		460 / 575	Contactor, 3 pole (BR)	E-0110 (3)	
		208 / 230	Fuse, 60 Amp	E-1160 (6)	
		460	Fuse, 25 Amp	E-1100 (6)	
		575	Fuse, 25 Amp	E-3050 (6)	
		208 / 230	Fuseblock, 60 Amp	E-1040	
		460 / 575	Fuseblock, 30 Amp	E-1050	

### 3.4.1 HOT GAS REHEAT, DX Models

FN	Models	Volts	Description	Part Number	RSP
NS	All	All	Assembly	008-0433	
	All		Solenoid Valve	P-017B	
			Check Valve	P-411A	
			Coil	X-0240	

### 3.4.2 STEAM REHEAT, DX and CW Downflow Models

Assembly

FN	Models	Volts	Description	Part Number	RSP
NS	DX	All	Assembly	1D13477G2	
	CW		Assembly	1D11397G2	
			2-Way Valve	P-0270	
	DX		2-Way Valve	P-0280	
	All		Modulating Motor, Spring Return	M-402A	
			Modulating Motor Linkage	M-4050	
			Strainer	R-0520	

### 3.4.3 HOT WATER REHEAT, DX and CW Downflow Models

FN	Models	Volts	Description	Part Number	RSP
NS	DX	All	Assembly, 2-Way Valve	1D13478G2	
			Assembly, 3-Way Valve	1D13479G2	
	CW		Assembly, 2-Way Valve	1D11824G2	
			Assembly, 3-Way Valve	1D11822G2	
	All		Coil	R-016A	
			Modulating Motor, Spring Return	M-402A	
			Modulating Motor Linkage	M-4050	
			Strainer	R-0520	

### 3.5 FLUID CONTROLS

20, 22, 30 Ton

#### Water / Glycol Regulation Valve, DX Models

FN	Models	Pressure	Design	Part No.	RSP
6-1	All	Standard	2-Way	131852P2 (2)	
6-2			3-Way	131853P2 (2)	
6-1		High	2-Way	P-311A (2)	
6-2			3-Way	P-311B (2)	

#### Econ-O-Coil Valve and Actuator, DX Models

FN	Models	Pressure	Design	Part No.	RSP
NS	Econ-O-Coil	Standard	3-Way	P-4390	
		High	3-Way	1C23806P6	
		Standard	Actuator	1C14176P1	
		High	Actuator	1C23803P3	
	Previous Design	Standard	Modulating Motor	M-401A	
		High	Modulating Motor	M-4100	
		All	Modulating Motor Linkage	M-4050	

#### Chilled Water Valve and Actuator

FN	Models	Pressure	Design	Part No.	RSP
NS	CW	Standard	2-Way	123622P3	
		High	2-Way	1C23805P6	
		Standard	3-Way	123623P3	
		High	3-Way	1C23806P6	
		Standard	Actuator	1C14176P1	
		High	Actuator	1C23803P3	
	Previous Design	Standard	Modulating Motor	M-401A	
		High	Modulating Motor	M-4100	
		All	Modulating Motor Linkage	M-4050	

*Handwritten notes: P4, Need Link, 1C23804P2, 1C16409G1*

#### Evaporator Coils

FN	Models	Design	Part No.	RSP
NS	20 Ton	2 Step	1D10971G5	
		2 Step, Upflow with Econ-O-Coil	1D10957G1	
		4 Step	1D16582G2	
		4 Step, Upflow with Econ-O-Coil	1D16582G2	
	22 Ton	2 Step	1D10971G5	
		4 Step	1D16582G3	
	30 Ton	2 Step	1D13772G11	
		4 Step	1D13772G12	

#### Econ-O-Coil Coils, Downflow Only

FN	Models	Design	Part No.	RSP
NS	20, 22 Ton	4 Row	X-0930	
		6 Row	X02-0090	
	30 Ton	4 Row	1D16582G4	

### Accessories, CW Models

FN	Models	Description	Part No.	RSP
NS	All	Bypass Valve	1C14431P6	
	Standard Pressure	Flow Switch	P-4120	
	High Pressure	Flow Switch	P-5540	

### Condenser, DX Models (Water / Glycol)

FN	Models	Tons	Pressure	Part No.	RSP
6-3	Water	All	Standard	J-002G (2)	
			High	J-011H (2)	
	Glycol	20 / 22	Standard	J-011G (2)	
		30		125685P1 (2)	
		20 / 22	High	J-011H (2)	
		30		125685P2 (2)	

### Condensate Pump

FN	Models	Volts	Description	Part No.	RSP
NS	All	208 / 230 / 575	Pump	X-015A	
		460	Pump	1C19034P1	
		575	Transformer	021-1212	

## Section 4 - CONTROLS, Deluxe System / 3

### DISCONNECTS, DX and CW Models

#### Standard Disconnects, GE

FN	Models	Volts	Description	Part No.	RSP
NS	15 to 30 Ton	208 / 230	Disconnect	E-2900	
7-1	Locking		Interlocking Handle	E-290A	
NS			Interlocking Door Ring	E-288B	
7-2			Label	4C10505P2	
NS			Mounting Bracket	F02-2140	
7-2	Non-Locking		Label	4C10505P1	
NS			Mounting Bracket	F02-2160	
7-3			Bezel	S-6210	

#### Standard Disconnects, Klockner / Moeller

FN	Models	Volts	Description	Part No.	RSP
NS	6, 8, 10 Ton All	208 / 230 460 / 575	Disconnect	1C18351P1	
			Locking Collar	1C18354P1	
			Mounting Bracket	1C18603P1	
			Shaft Extension	1A18353P1	
			Handle	1C18352P1	
			Label	4D10624P1	
			Bezel	S-6210	
			Screws (4)	S30-0070	

#### Shunt Trip Disconnects

FN	Models	Volts	Description	Part No.	RSP
NS	6, 8, 10 Ton	208 / 230	Disconnect	E02-2890	
	15 to 30 Ton		Disconnect	E02-2900	
	All	460	D:isconnect	E02-2880	
		575	D:sconnect	E02-2910	
	Locking	All	Interlocking Handle	E-290A	
			Interlocking Door Ring	E-288B	
			Label	4C10505P2	
			Mounting Bracket	F02-2140	
	Non-Locking		Label	4C10505P1	
			Mounting Bracket	F02-2160	
			Bezel	S-6210	

## ELECTRONICS

### Standard Microprocessor (SM)

FN	Models	Description	Part No.	RSP
8-1	DX	Control Board	4D14331G2	
	CW	Control Board	4D14331G3	
8-2	English	Display	135687G4	
	French	Display	135687G5	
	Spanish	Display	135687G6	
8-9	Most	Display Cable	1C13999G1	
	Large CW	Display Cable	1C13999G2	
8-3	All	On Switch (with light)	140589P1	
8-4	Glycool	Comparator Circuit	4C14431G1	
8-5	Glycool	Glycol / Return Air Sensor	020-0433 (2)	
8-6	Optional	Sequential Auto Restart Relay	E-3530	

### Advanced Microprocessor (AM)

FN	Models	Description	Part No.	RSP
9-1	All	Control Board	4D14571G1	
9-2	Most	Display (with 24" Cable)	139145G1	
	Large CW	Display (with 36" Cable)	139145G8	
9-7	Glycool	Glycol Sensor	020-0433	

### Advanced Microprocessor with Graphics (AG)

FN	Models	Description	Part No.	RSP
9-1	All	Control Board	4D14571G2	
9-3		Display	139140G1	
9-9	Most	Display Cable (20 " Long)	139147G1	
	Large CW	Display Cable (36 " Long)	139147G2	
9-7	Glycool	Glycol Sensor	020-0433	

### Common Boards (All Models)

FN	Models	Description	Part No.	RSP
8-8, 9-8	All	T/H Sensors	4C13121G2	
See Figure 8,9		Iso Transformer / Fuse Blocks	4C14651G1	
	60 Hz	Fuse, 4 Amp	135409P2 (4)	
	50 Hz	Fuse, 6 Amp	135409P3 (4)	
	All	Lithium Battery, 3V	1C14652P1	

### Safety Switches

FN	Models	Description	Part No.	RSP
	All	Filter Clog Switch	E-043C	
		Air Sail Switch	B02-0190	
	Optional	Firestat	E-2350	
		Smoke Detector Control	124502P1	
		Smoke Detector Sensor	128203P1	
		Smoke Detector Base	128204P1	

## Section 5 - FILTERS and PANELS

### FILTERS

#### Filters, DX Models

FN	Models	Description	48"	72"	90"	97/120"	RSP
NS	Downflow, w/o Econ-O-Coil	2", 20%		A-0350 (3)	A-0350 (3) A-0340 (1)	A-0350 (*)	
		4", 20%		A-0010 (3)	A-0010 (3) A-0020 (1)	A-0010 (*)	
		4", 30%		A-0380 (3)	A-0380 (3) A-0390 (1)	A-0380 (*)	
		6", 65%		A-0030 (3)	A-0030 (3) A-0040 (1)	A-0030 (*)	
* - Quantity = 4 for 20 / 22 Ton; 5 for 30 Ton							
NS	Downflow, with Econ-O-Coil	2", 20%		A-0350 (2) A-0340	A-0350 (2) A-0340 (1)	A-0350 (**)	
		4", 20%		A-0010 (2) A-0020	A-0010 (2) A-0020 (1)	A-0010 (**)	
		4", 30%		A-0380 (2) A-0390	A-0380 (2) A-0390 (1)	A-0380 (**)	
** - Quantity = 3 for 20 / 22 Ton; 4 for 30 Ton							
NS	Upflow, Front / Rear Return	2", 20%		A-0360 (1) A-0370 (1)	A-0360 (3) A-0370 (3)	A-0360 (2)	
		4", 20%		A-0320 (1) A-0330 (1)	A-0320 (3) A-0330 (3)	A-0320 (2)	
		4", 30%		A-0400 (1) A-0410 (1)	A-0400 (3) A-0410 (3)	A-0400 (2)	
		6", 65%		A-0110 (1) A-0120 (1)	A-0110 (3) A-0120 (3)	A-0110 (2)	
	Upflow, Bottom Return	2", 20%		A-0350 (3) A-0340 (1)	A-0350 (3)	A-0350 (4)	
		4", 20%		A-0010 (3) A-0020 (1)	A-0010 (3)	A-0010 (4)	
		4", 30%		A-0380 (3) A-0390 (1)	A-0380 (3)	A-0380 (4)	
		6", 65%		A-0030 (3) A-0040 (1)	A-0030 (3)	A-0030 (4)	

#### Filters, CW Models

FN	Models	Description	48"	72"	90"	97/120"	RSP
NS	Downflow	4", 40%	A-0020 (4)	A-0020 (6)		A-0020 (8)	
		4", 60%	A-0390 (4)	A-0390 (6)		A-0390 (8)	
	Upflow, Front Return	4", 40%	A-0010 (2)	A-0010 (3)		A-0010 (4)	
		4", 60%	A-0380 (2)	A-0380 (3)		A-0380 (4)	
	Upflow, Rear / Bottom Return	4", 40%	A-0020 (4)	A-0020 (6)		A-0020 (8)	
		4", 60%	A-0390 (4)	A-0390 (6)		A-0390 (8)	

## PANELS

### Accent Panels (top,front)

FN	Models	Disconnect	Part No.	RSP
See Fig. 10	147C, 200C, 248C	Yes	1D16620G7	
		No	1D16620G8	
	6, 8, 10 Ton DX 302C, 376C	Yes	1D16620G1	
		No	1D16620G4	
	15 Ton DX	Yes	1D16620G2	
		No	1D16620G5	
	20, 22 Ton DX 422C, 549C	Yes	1D16620G3	
		No	1D16620G6	
	30 Ton DX	Yes	1D16620G3	
		No	1D16620G3	
	600C, 740C	All	136023G1	

### Exterior Panels 6, 8, 10 Ton DX

FN	Models	Return	Panel Location	Part No.	RSP
See Fig. 10	Downflow	Top	Front Middle / Rear Top	F02-7110 (2)	
			Front Bottom / Rear Middle & Bottom	F02-7080 (3)	
			Sides	1C21770P1 (2)	
	Upflow	Front	Front Middle / Rear Top	F02-7110 (2)	
			Rear Bottom / Rear Middle	F02-7080 (2)	
			Front Bottom with Grill Opening	F02-7140	
		Rear	Front Middle / Rear Top	F02-7110 (2)	
			Front Bottom / Rear Middle	F02-7080 (2)	
			Rear Bottom with Grill Opening	F02-7140	
		Front / Rear	Grill, Air Return	1C19065P3	
		Bottom	Front Middle / Rear Top	F02-7110 (2)	
			Front Bottom / Rear Middle & Bottom	F02-7080 (3)	
		All	Compressor End Top	F02-1140	
			Compressor End Bottom	1D19013G2	
			Right End	1C21770P1	
			Cover Btm Comp Panel	1C19014P1	

### Exterior Panels 147C, 200C, 248C

FN	Models	Return	Panel Location	Part No.	RSP
See Fig. 10	Downflow	Top	Front Middle / Rear Top	F02-6940 (2)	
			Front Bottom / Rear Middle & Bottom	F02-6950 (3)	
			Sides	1C21770P2 (2)	
	Upflow	Front	Front Middle / Rear Top	F02-6940 (2)	
			Rear Bottom / Rear Middle	F02-6950 (2)	
			Front Bottom with Grill Opening	F02-7060	
			Front Bottom with Duct Opening	F02-7070	
		Rear	Front Middle / Rear Top	F02-7110 (2)	
			Front Bottom / Rear Middle	F02-7080 (2)	
			Rear Bottom with Grill Opening	F02-7060	
			Rear Bottom with Duct Opening	F02-7070	
		Front / Rear	Grill, Air Return	1C19065P2	
		Bottom	Front Middle / Rear Top	F02-6940 (2)	
			Front Bottom / Rear Middle & Bottom	F02-6950 (3)	
		All	Left End Fixed	F02-1140	
			Left End Removable	1C21770P3	
			Right End	1C21770P2	
			Piping Cover	FP02-116C	

### Exterior Panels 15 Ton DX

FN	Models	Return	Panel Location	Part No.	RSP
See Fig. 10	Downflow	All	Front Middle / Rear Top	F02-7120 (2)	
			Front Bottom / Rear Middle & Bottom	F02-7090 (3)	
			Sides	1C21770P1 (2)	
	Upflow	Front	Front Middle / Rear Top	F02-7120 (2)	
			Rear Bottom / Rear Middle	F02-7090 (2)	
			Front Bottom with Grill Opening	F02-7150	
		Rear	Front Middle / Rear Top	F02-7110 (2)	
			Front Bottom / Rear Middle	F02-7080 (2)	
			Rear Bottom with Grill Opening	F02-7060	
			Rear Bottom with Duct Opening	F02-7070	
		Front / Rear	Grill, Air Return	1C19065P1	
		Bottom	Front Middle / Rear Top	F02-7090 (2)	
			Front Bottom / Rear Middle & Bottom	F02-6950 (3)	
		All	Compressor End Top	F02-1140	
			Compressor End Bottom	1D19013G2	
			Right End	1C21770P1	
			Cover Btm Comp Panel	1C19014P1	

## Exterior Panels 302C, 376C

FN	Models	Return	Panel Location	Part No.	RSP
See Fig. 10	Downflow	Top	Front Middle / Rear Top	F02-7110 (2)	
			Front Bottom / Rear Middle & Bottom	F02-7080 (3)	
			Sides	1C21770P2 (2)	
	Upflow	Front	Front Middle / Rear Top	F02-7110 (2)	
			Rear Bottom / Rear Middle	F02-7080 (2)	
			Front Bottom with Grill Opening	F02-7140	
			Front Bottom with Duct Opening	F02-714A	
			Left End Fixed	1C11785P1	
		Rear	Front Middle / Rear Top	F02-7110 (2)	
			Front Bottom / Rear Middle	F02-7080 (2)	
			Rear Bottom with Grill Opening	F02-7140	
			Rear Bottom with Duct Opening	F02-714A	
			Left End Fixed	1C11819P1	
		Front / Rear	Grill, Air Return	1C19065P3	
		Bottom	Front Middle / Rear Top	F02-7110 (2)	
			Front Bottom / Rear Middle & Bottom	F02-7080 (3)	
			Left End Fixed	1C11785P1	
		All	Left End Removable	1C21770P3	
			Right End	1C21770P2	
			Piping Cover	FP02-116C	

## Exterior Panels 20, 22, 30 Ton DX

FN	Models	Return	Panel Location	Part No.	RSP
See Fig. 10	Downflow	Top	Front Middle / Rear Top	F02-7130 (2)	
			Front Bottom / Rear Middle & Bottom	F02-7100 (3)	
			Sides	1C21770P2 (2)	
			Front / Rear (120")	1C21770P4 (2)	
	Upflow	Front	Front Middle / Rear Top	F02-7130 (2)	
			Rear Bottom / Rear Middle	F02-7100 (2)	
			Front Bottom with Grill Opening	F02-7160	
			Front (120")	1C28507P1	
			Rear (120")	1C21770P4	
		Rear	Front Middle / Rear Top	F02-7130 (2)	
			Front Bottom / Rear Middle	F02-7100 (2)	
			Rear Bottom with Grill Opening	F02-7160	
			Front (120")	1C21770P4	
			Rear (120")	1C28507P1	
		Front / Rear	Grill, Air Return	1C19065P1	
			Grill, Air Return (120")	1C28519P1	
		Bottom	Front Middle / Rear Top	F02-7130 (2)	
			Front Bottom / Rear Middle & Bottom	F02-7100 (3)	
		All	Compressor End Top	F02-1150	
			Compressor End Bottom	1D19013G1	
			Right End	1C21770P2	
			Cover Btm Comp Panel	1C19014P1	

Exterior Panels 600C, 740C

FN	Models	Return	Panel Location	Part No.	RSP
See Fig. 10	Downflow Only	Top	Front / Rear Bottom	136021G1 (2)	
			Front Bottom / Rear Top, Middle	136022G1(3)	
			Sides	136057G1 (2)	
			Front / Rear Vertical	136058G1 (2)	



---

## Section 6 - Illustrations, Deluxe System / 3

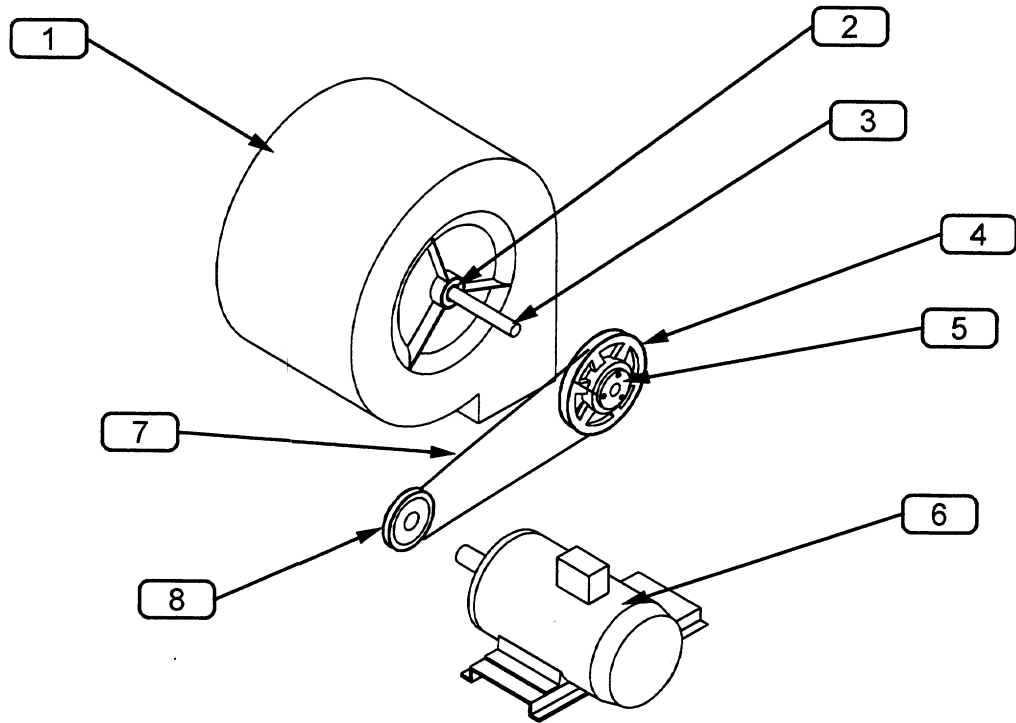


Figure 1a. Downflow Blower, CW Models

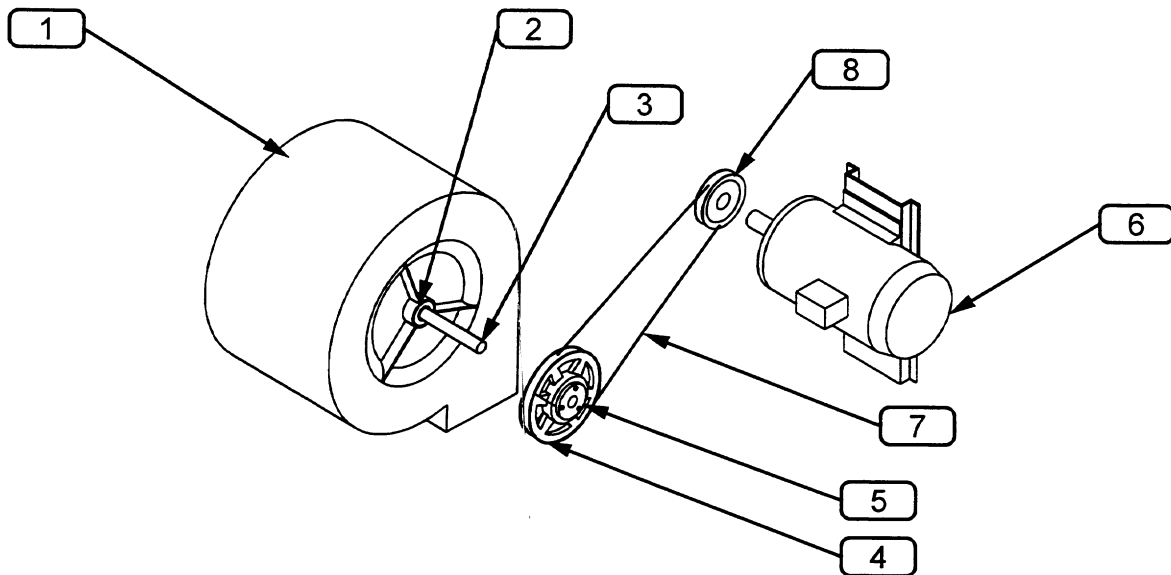


Figure 1b. Downflow Blower, DX Models and 120" CW

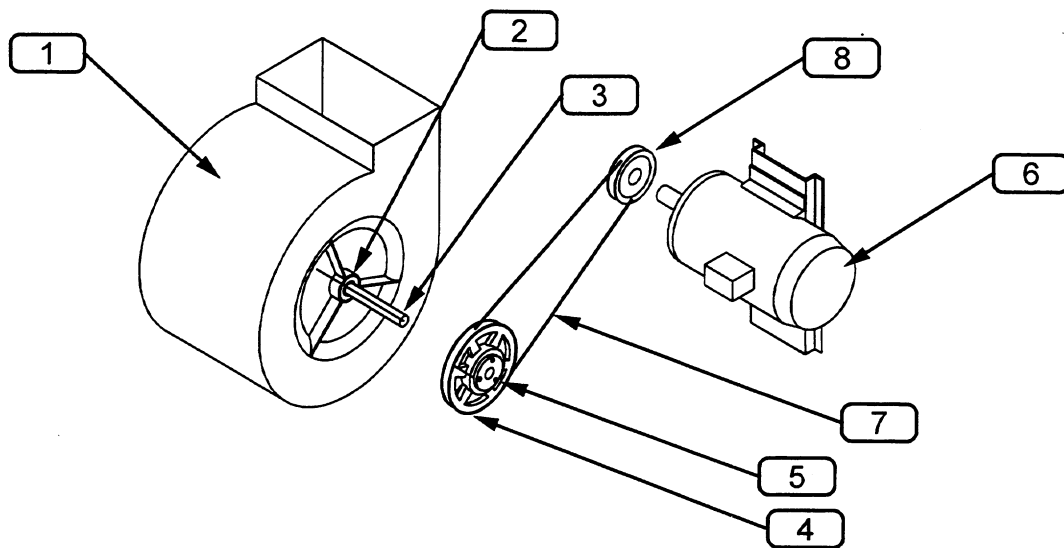


Figure 1c. Upflow Blower

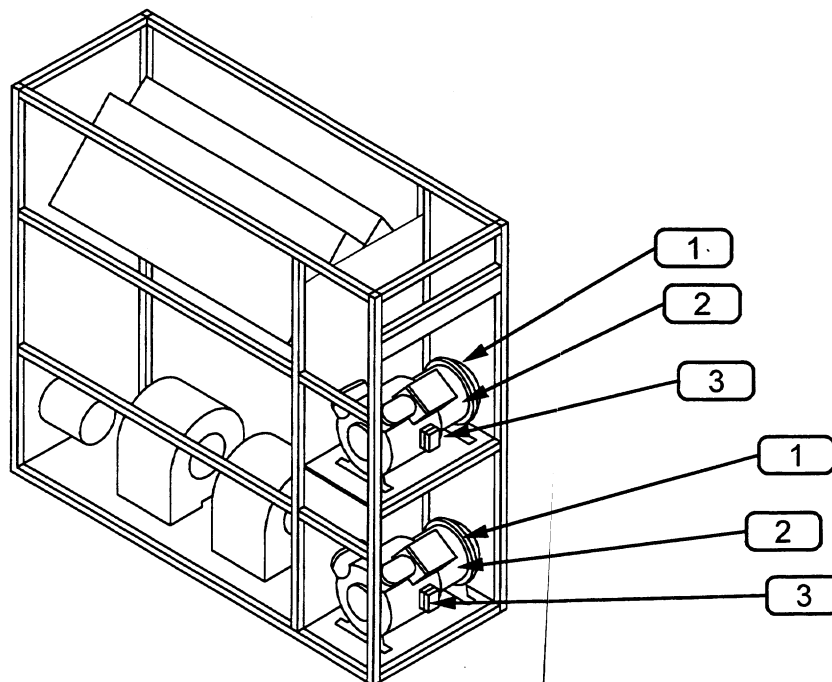


Figure 2. Compressor

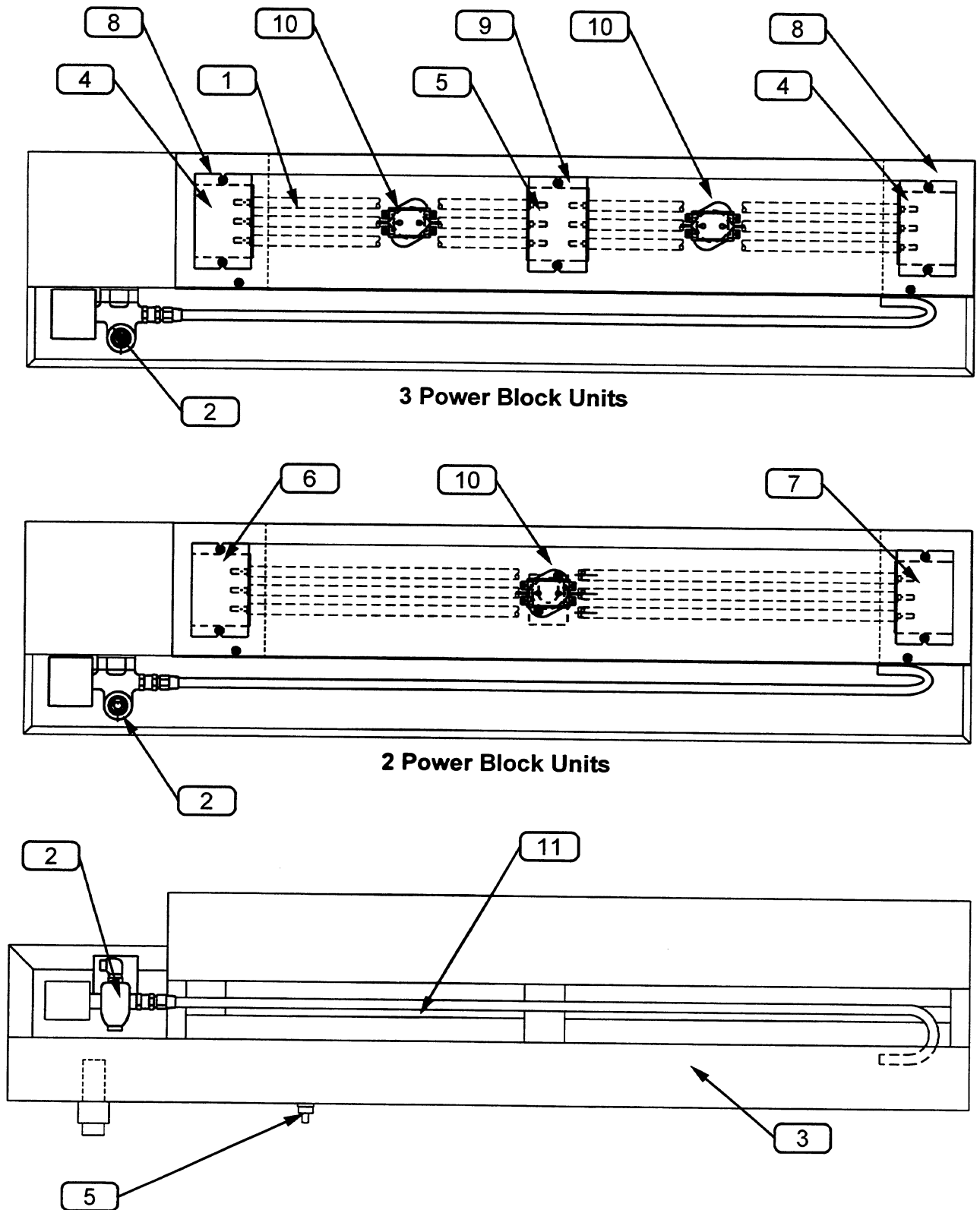
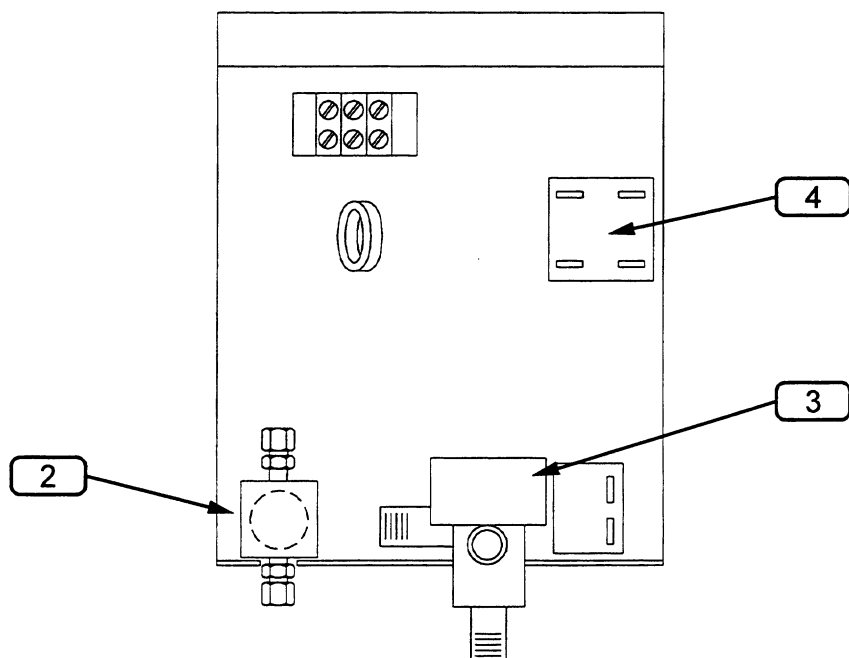
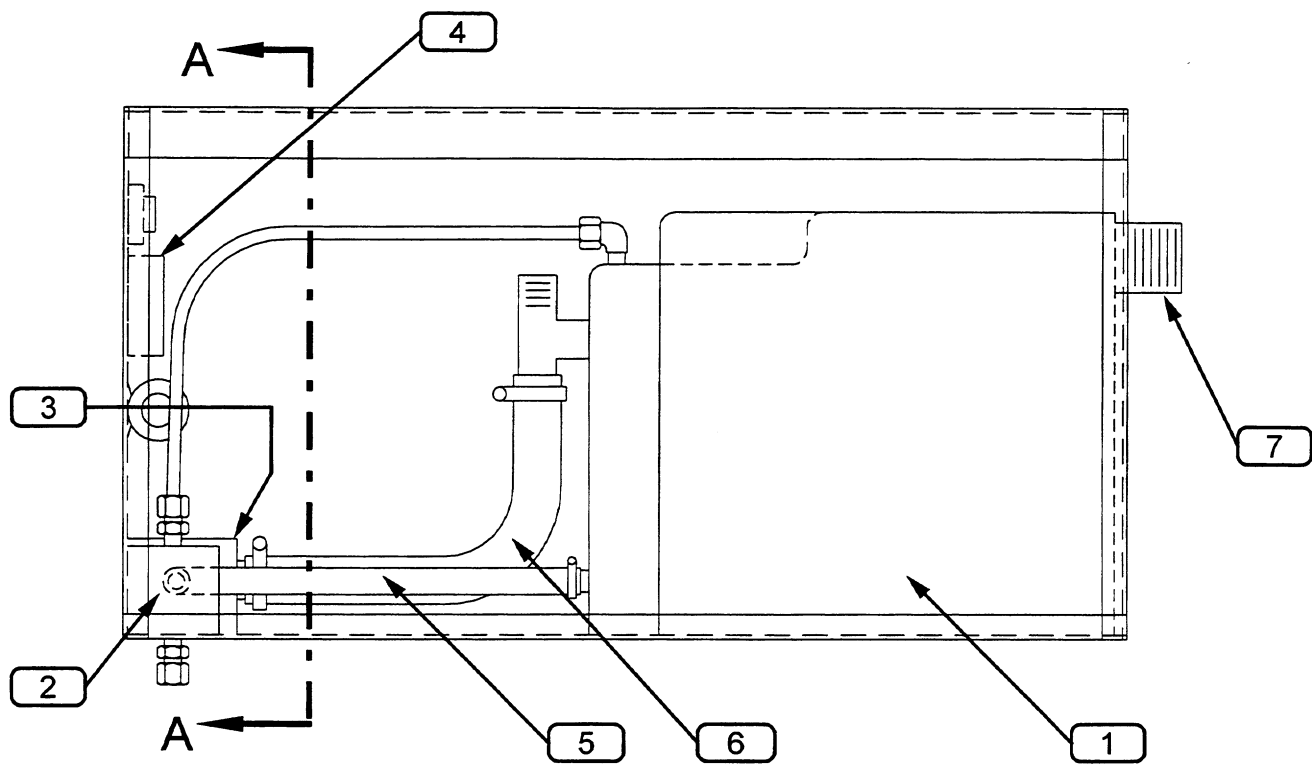


Figure 3. Infrared Humidifier



Section A-A

Figure 4. Steam Generating Humidifier

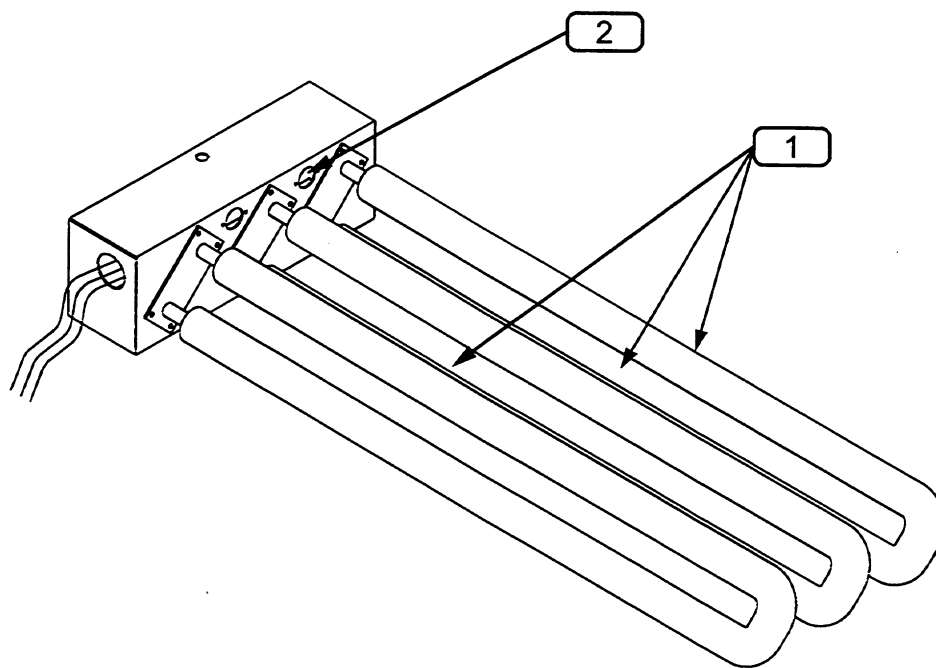


Figure 5. Electric Reheat

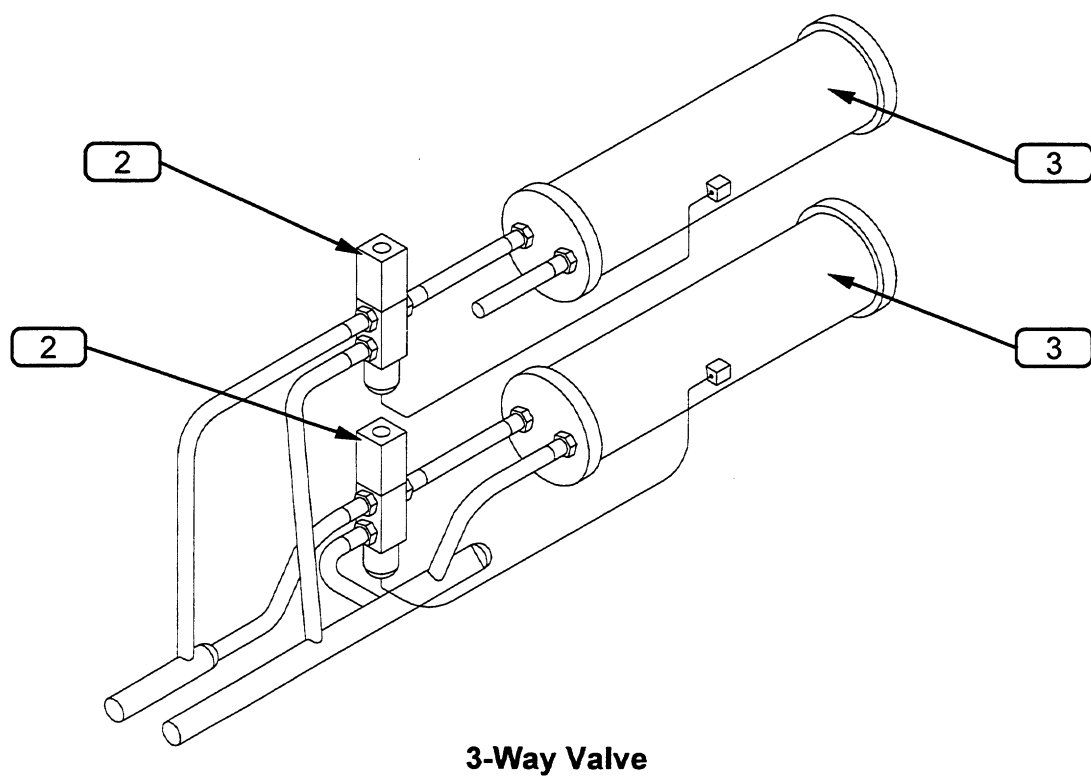
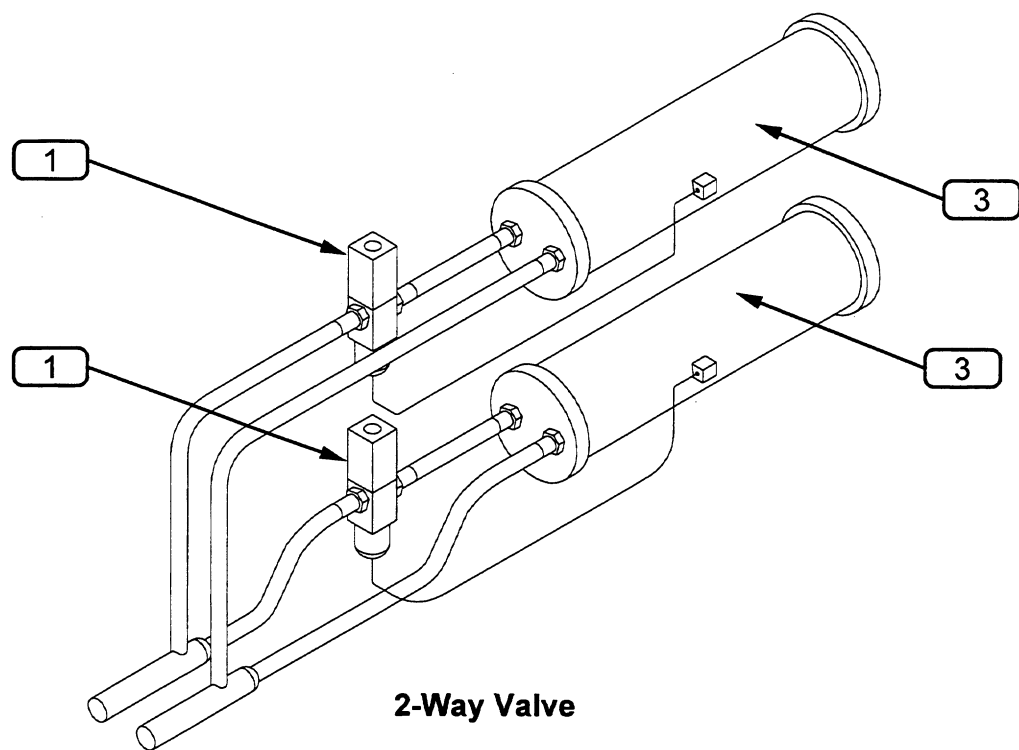


Figure 6. Condenser and Valve

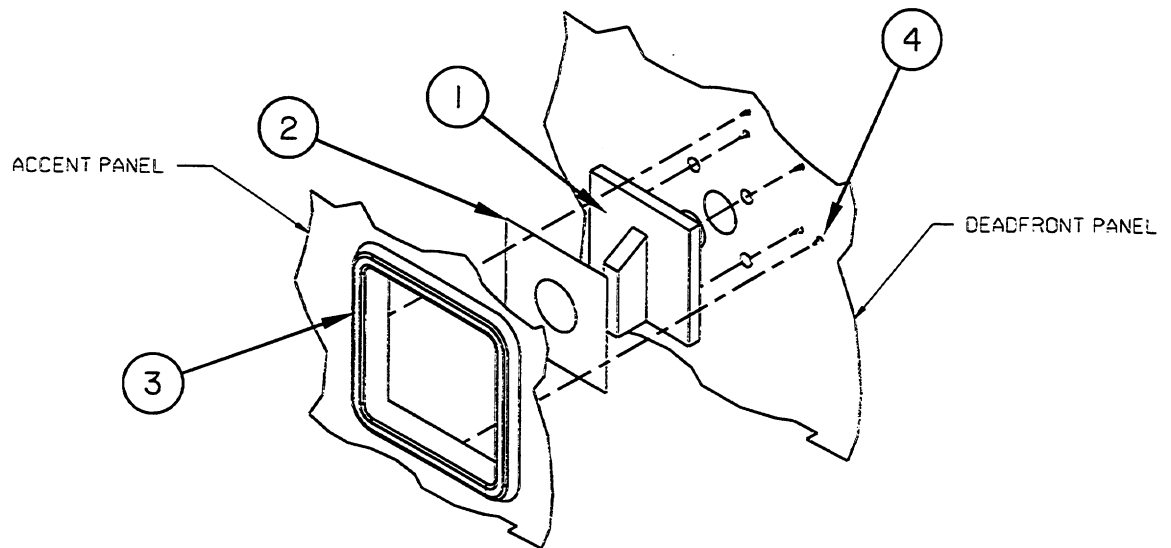


Figure 7. Standard Disconnect

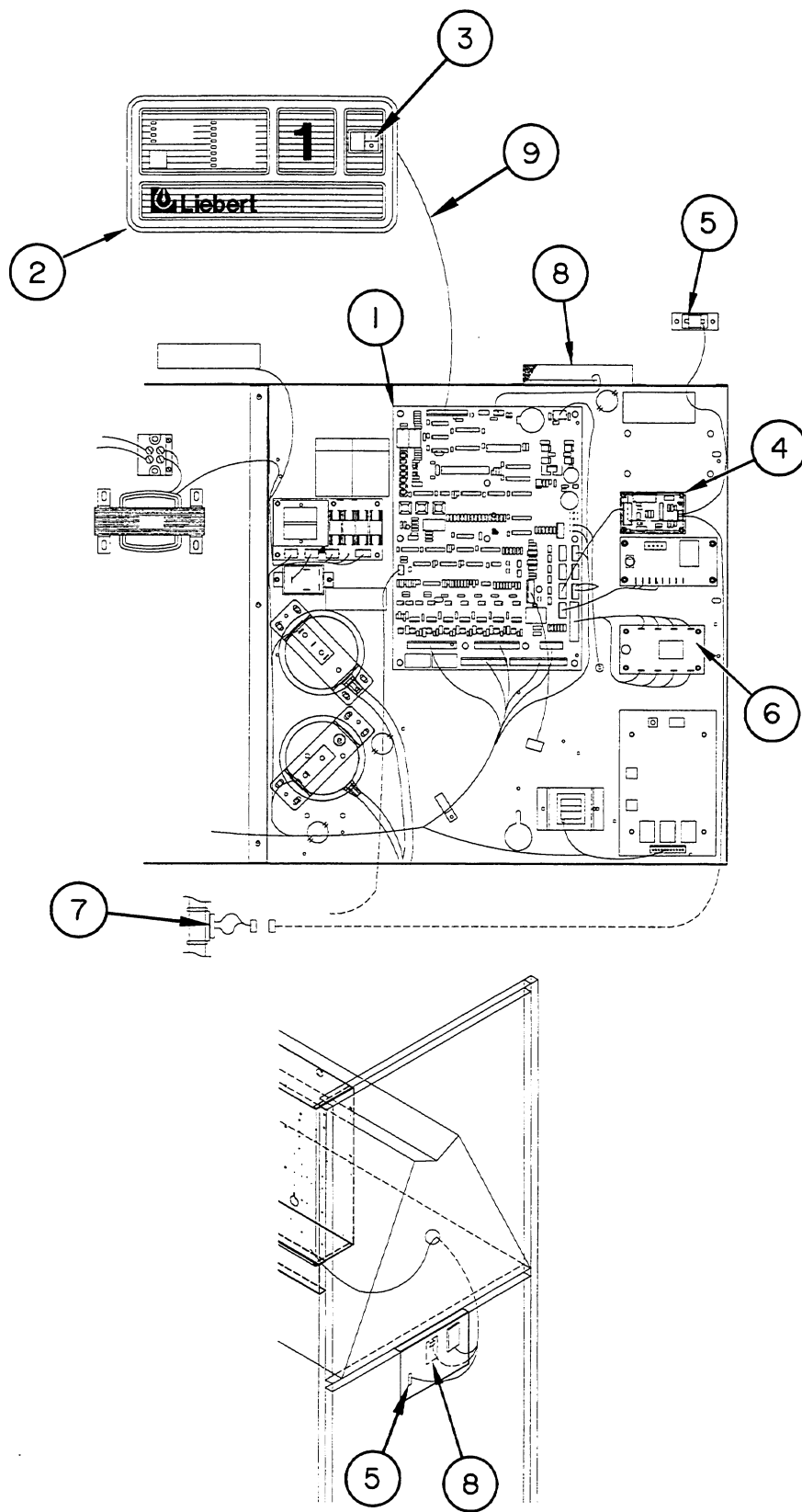


Figure 8. Standard Microprocessor

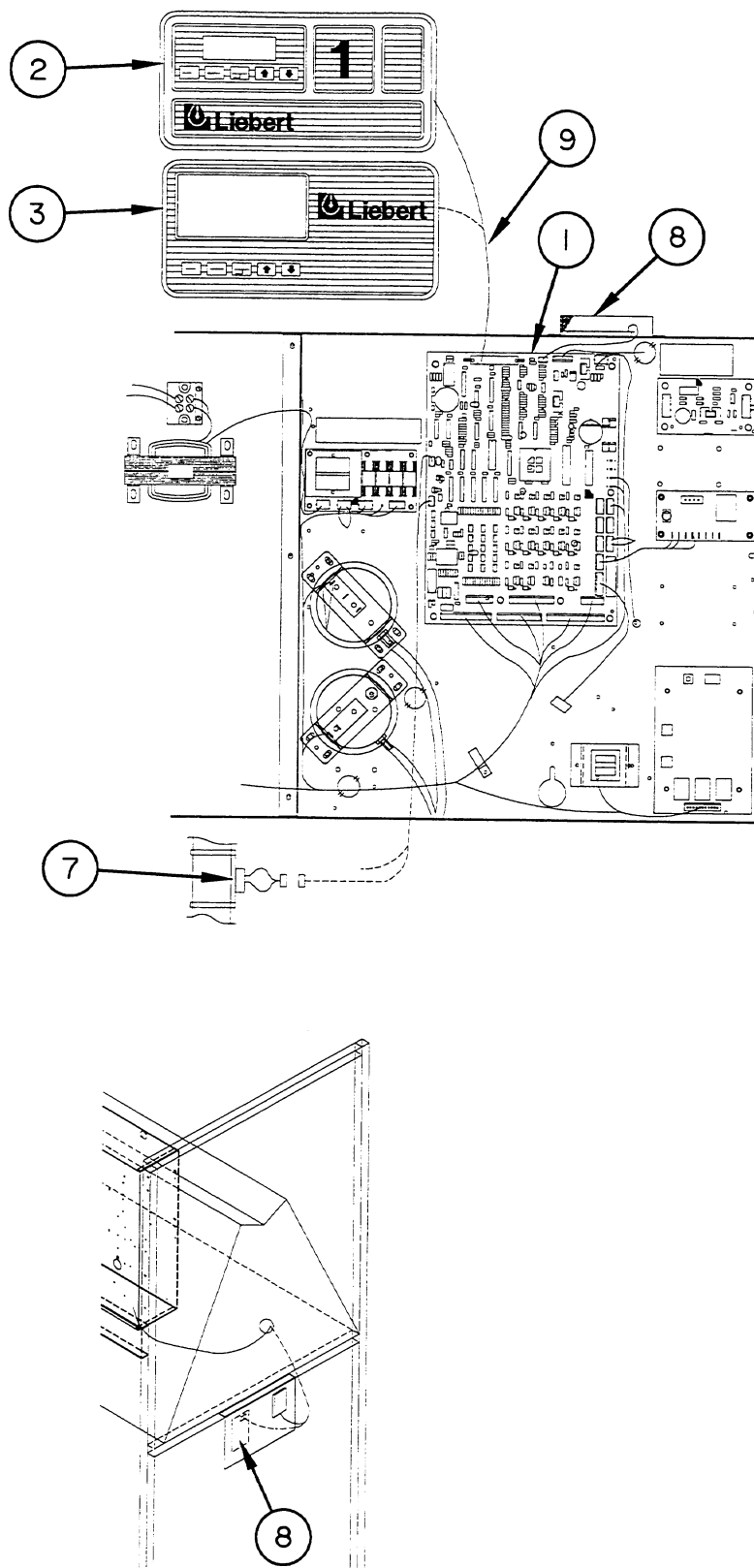


Figure 9. Advanced Microprocessor with Graphics

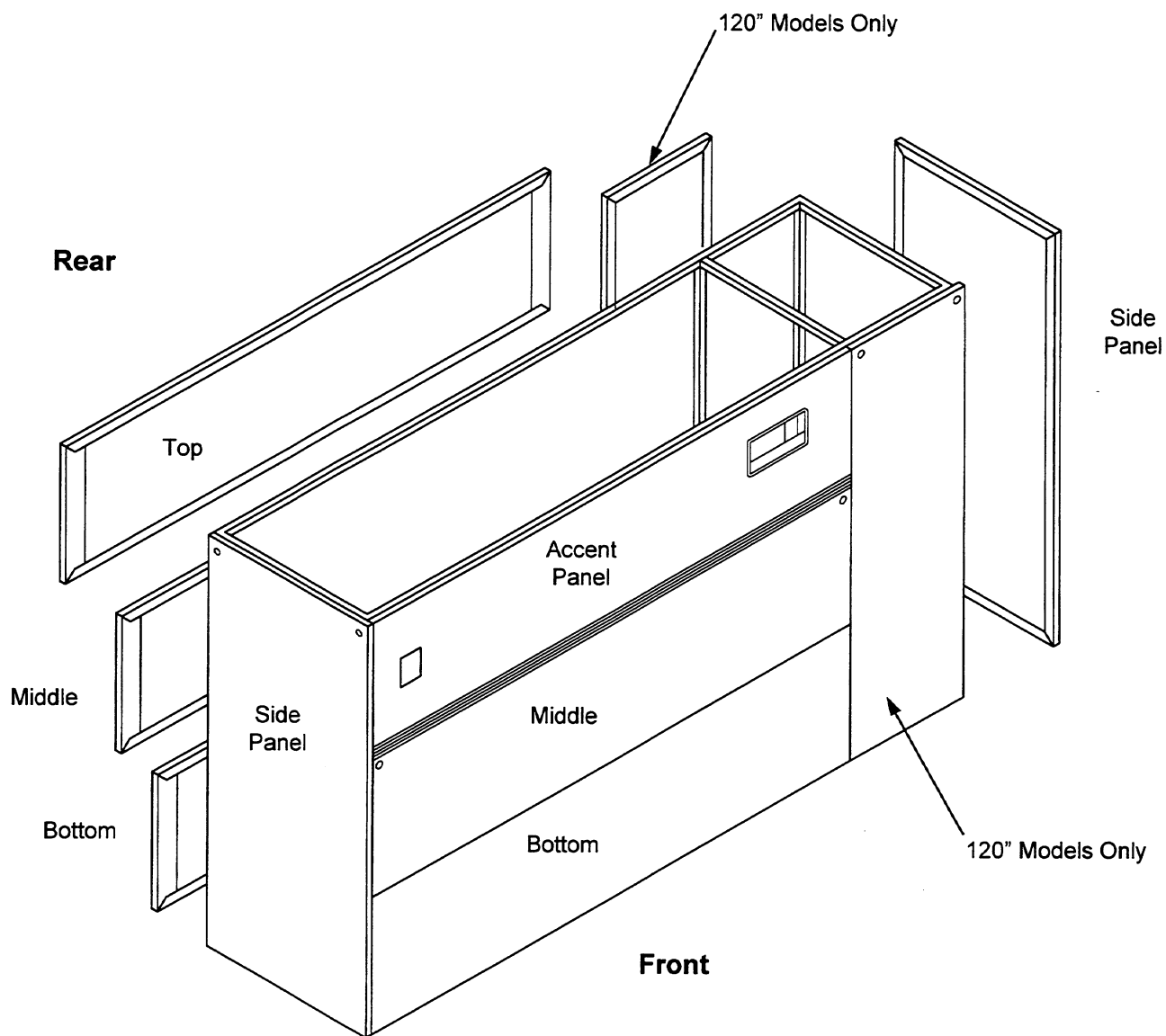


Figure 10. Panels



---

## DELUXE SYSTEM/3 – PARTS MANUAL

### **A World Leader in Computer Support Systems**

Environmental Control • Power Protection • Site Monitoring/Control  
Service • Parts • Training

Liebert Corporation designs, manufactures, and markets complete systems for improvement of computer uptime and performance. The result is improved business operations, increased productivity and higher return on the computer investment. Liebert Systems provide dependable environmental control, electrical power protection, centralized monitoring and control, and remote monitoring. Liebert supports its products with a combination of preventive maintenance, emergency repairs, depot repairs, parts, technical assistance, and training. This approach represents a single-source integrated computer support network.

Based on over three decades of experience and more than 500,000 installations worldwide, Liebert is committed to offering the highest quality products and services for applications requiring computer support.



#### **Liebert Corporation**

1050 Dearborn Drive  
P.O. Box 29186  
Columbus OH 43229  
Telephone: 614.888.0246  
Facsimile: 614.841.6022

#### **Liebert Europe**

Elgin Drive  
Swindon  
Wiltshire SN2 6DX  
United Kingdom  
Telephone: 441.793.553.355  
Facsimile: 441.793.553.400

While every precaution has been taken to ensure accuracy and completeness in this manual, Liebert Corporation assumes no responsibility, and disclaims all liability for damages resulting from use of this information or for any errors or omissions.

©1994 Liebert Corporation All rights reserved throughout the world. Specifications subject to change without notice.

©Liebert and the Liebert logo are registered trademarks of Liebert Corporation.

Printed in U.S.A.  
SL-18360 (10/95) (60)



SL-18360