



Condensor/DryCooler

(Including Lee-Temp, Quiet-Line, and Pump Packages)

Parts Manual

Rev. 1/1996

Liebert Corporation may make improvements and/or changes in the products described in the document at any time without notice. Part numbers and technical information are subject to change without prior notice.

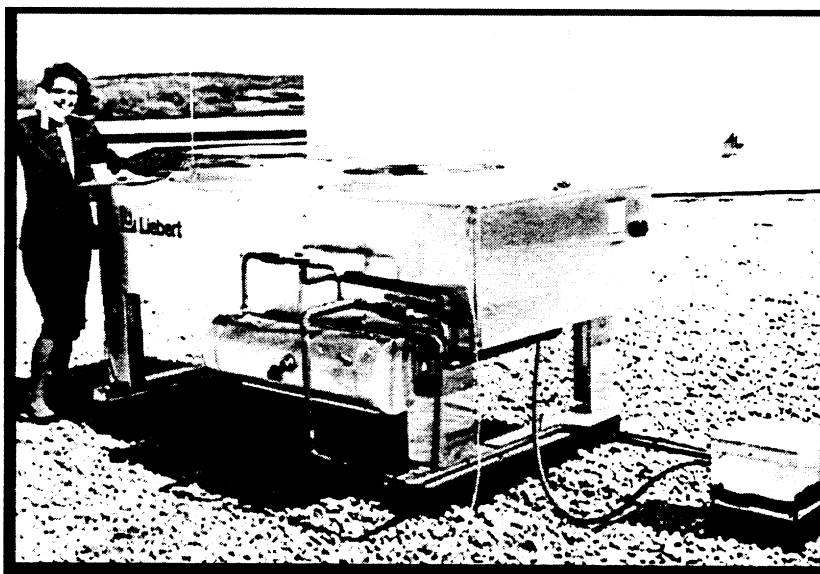
Liebert Corporation assumes no responsibility and disclaims all liability for incidental or consequential damages resulting from use of this information from errors or omissions.

Condensers and Drycoolers

(including Lee-Temp, Quiet-Line,
and Pump Packages)

60 Hz

PARTS MANUAL



**When ordering parts, have the unit
Model Number and Serial Number
available if at all possible.**

Liebert

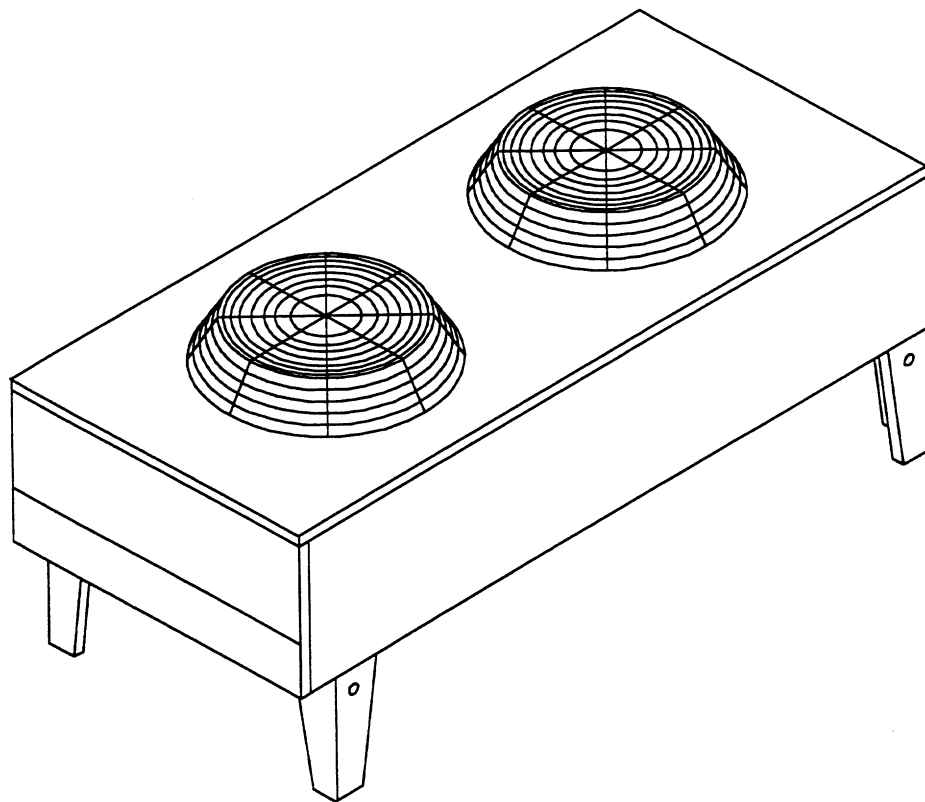
Condensers and Drycoolers Parts Manual

Table of Contents

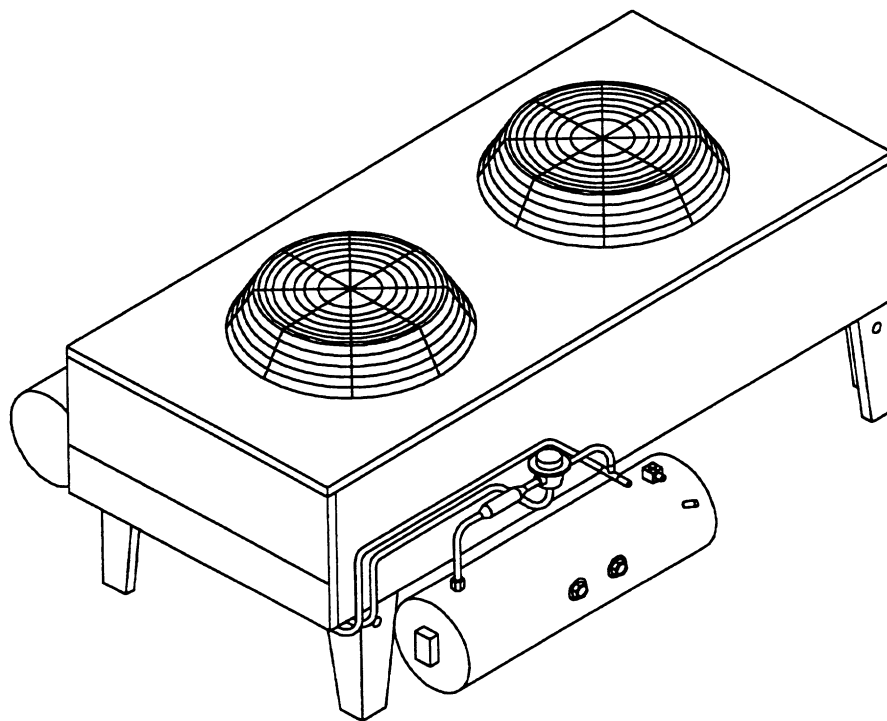
SECTION 1 - Motors and Controls - Fan Speed Control	1
SECTION 2 - Motors and Controls - Fan Cycling Control / Lee-Temp	2
SECTION 3 - Motors and Controls - Quite-Line Condensers and Drycoolers.....	3
SECTION 4 - Lee-Temp Parts	3
SECTION 5 - Common Parts Condensers and Drycoolers (including Quite-Line).....	6
SECTION 6 - Condenser / Drycooler Coils.....	7
SECTION 7 - Pump Controls.....	8
SECTION 8 - Pump Packages.....	9

FIGURES

Typical 2 Fan Condenser.....	ii
Typical 2 Fan Condenser with Lee-Temp.....	ii
Fig. 1a - Typical Figures of Condensers and Drycoolers	10
Fig. 1b - Typical Fan and Motor Arrangement.....	11
Fig. 2 - Fan Speed Control Panel	12
Fig. 3 - Dual Pump Drycooler Control Panel	12
Fig. 4 - Lee-Temp Receiver.....	13



Typical 2 Fan Condenser



Typical 2 Fan Condenser with Lee-Temp

Section 1 - Motors and Controls, Fan Speed Control

			Model Numbers						
			CSF/CDF Air Cooled Condensers	083L 104L 107C	165L 205L 217C	251L 308L	330L 415L 480C 510C	616L	660L 830L 960C 1010C
			DSF/DDF Drycoolers	033 069 092 112					
FN	Part Name and Description	Part No.	1 Fan	2 Fan	3 Fan	4 Fan	6 Fan	8 Fan	
Fan Speed Control - Common Parts									
1b-4	Constant Speed Motor								
	208 / 230 / 460V, 3 ø	B67-0010		1	2	3	4	6	
	575 V, 3 ø	1C16992P1		1	2	3	4	6	
1b-4	FSC Motor - Condensers, 208/230/460 1 ø	B-095D	1	1	1	1	2	2	
	FSC Motor - Drycoolers, 208/230/460 1 ø	B-095D	1						
2-3	FSC Motor Capacitor	1A19536P1	1	1	1	1	2	2	
	Capacitor Mtg Bracket	S67-0010	1	1	1	1	2	2	
Fan Speed Control - Condenser Only Parts									
2-7	Input Fuse Block								
	208 / 230V 3P 30A	E-1020		1	1	1	1	1	
	208 / 230V 2P 30A	E-6040	1						
	460 / 575 3P 30A	E-1050		1	1	1	1	1	
	460 / 575 2P 30A	E-6030	1						
	Input Fuses								
	208 / 230V 15A	E-2070	2						
	208 / 230V 20A	E-1230		3					
	208 / 230V 25A	E-2080			3	3			
	208 / 230V 40A	E-2100					3	3	
	460 / 575V 15A	E-2410	2	3	3	3			
	460V 20A	E-2020					3	3	
	575V 17.5A	E-2730						3	
	575V 15A	E-2410					3		
	Fan Motor Contactor - 24V Coil								
2-4	FSC - 2 Pole	E-011A	1	1	1	1	2	2	
2-2	Constant Speed - 3 Pole	E-0110		1	2	2	4	4	
2-9	Fan Speed Control								
	FSC Fuse Block - 575 Volt Only	E-6030	1	1	1	1	1	1	
	FSC Fuses - 575 Volt Only	E-1960	2	2	2	2	2	2	
2-8	Step-Down Transformer - 575 Volt Only	E-0020	1	1	1	1	2	2	
2-6	FSC Controller - Condensers	1C25447P1	1	1	1	1			
	FSC Controller - Condensers	1C25446P1					2	2	
Fan Speed Control - Drycooler Only Parts									
			1 Fan						
			DSF	DDF 230V Only					
2-7	Input Fuse Block								
	230V 3P 30A	E-1020		1					
	208 / 230V 2P 30A	E-6040	1						
	460 / 575 3P 30A	E-1050	1						
	Input Fuses								
	230V 30A	E-2090		3					
	208 / 230V 15A	E-2070	2						
	460 / 575 15A	E-2410	3						
2-4	FSC Motor Contactor - 2 Pole, 24V Coil	E-011A	1	1					
2-9	Fan Speed Control								
	FSC Fuse Block - 460 / 575 Volt Only	E-6030	1						
	FSC Fuses - 460 / 575 Volt Only	E-2860	2						
2-8	Step-Down Trans.- 460 / 575 Volt Only	E-0010	1						
2-6	FSC Controller	E-325A	1	1					
	FSC Controller Thermister	E-325B	1	1					

Section 2 - Motors and Controls, Fan Cycling Control / Lee-Temp

			Model Numbers						
			CST/CDT CSL/CDL	083L 104L 107C	165L 205L 217C	251L 308L	330L 415L 480C 510C	616L	660L 830L 960C 1010C
			DST/DDT DSO/DDO DNT/DNL	033 069 092 112	139 174 197 225	260 310 350	352 419 466 491	620 650 700	790 880 940
FN	Part Name and Description	Part No.	1 Fan	2 Fan	3 Fan	4 Fan	6 Fan	8 Fan	
Common Parts - Condensers and Drycoolers									
1b-4	Constant Speed Motor								
	208 / 230 / 460V 3 Phase	B67-0010	1	2	3	4	6	8	
	575 V 3 Phase	1C16992P1	1	2	3	4	6	8	
Fan Cycling Control Only Parts									
2-7	Input Fuse Block								
	208 / 230V 3P 30A	E-1020	1	1	1	1	1	1	
	460 / 575 3P 30A	E-1050	1	1	1	1	1	1	
	Input Fuses								
	208 / 230V 20A	E-2070	3						
	208 / 230V 20A	E-1230		3					
	208 / 230V 25A	E-2080			3	3			
	208 / 230V 40A	E-2100					3	3	
	460 / 575V 15A	E-2410	3	3	3	3	3	3	
	460V 20A	E-2020					3		
	575V 17.5A	E-2730							3
2-2	Fan Motor Contactor								
	Constant Speed - 3 Pole, 24V Coil	E-0110	1	2	3	3	3	3	
Lee-Temp Only Parts									
2-7	Input Fuse Block								
	208 / 230V 2P 30A	E-6040	1						
	460 / 575 2P 30A	E-6030	1						
	208 / 230V 3P 30A	E-1020		1	1	1			
	208 / 230V 3P 60A	E-1040					1	1	
	460 / 575 3P 30A	E-1050		1	1	1	1	1	
	Input Fuses								
	208 / 230V 15A	E-2070	2						
	208 / 230V 20A	E-1230		3	3	3			
	208 / 230V 35A	E-1200					3		
	208 / 230V 40A	E-2100							3
	460 / 575 15A	E-2410	2	3	3	3	3	3	
	460V 20A	E-2020							3
	575V 17.5A	E-2730							3
2-2	Fan Motor Contactor - 3 Pole, 24V Coil	E-009F	1	1	1	1	1	1	1
Drycooler Only Parts - DST/DDT, DSO/DDO, DNT/DNL									
3-9	Input Fuse Block								
	208 / 230V 3P 30A	E-1020	1	1	1	1			
	208 / 230V 3P 60A	E-1040					1	1	
	460 / 575 3P 30A	E-1050	1	1	1	1	1	1	
	Input Fuses								
	208 / 230V 15A	E-2070	3						
	208 / 230V 20A	E-1230		3	3	3			
	208 / 230V 35A	E-1200					3		
	208 / 230V 40A	E-2100							3
	460 / 575 15A	E-2410	3	3	3	3	3	3	
	460V 20A	E-2020							3
	575V 17.5A	E-2730							3
3-3	Fan Motor Contactor - 3 Pole, 24V Coil	E-0110	1	2	2	2	2	2	2

Section 3 - Motors and Controls - Quiet-Line Condensers and Drycoolers

		Model Numbers						
		Condensers	063 067 060	119 127 143	179 214	238 276 286	358 409	477 572
				080 111 121	158 173 178	205 248	347 356	453 498
FN	Part Name and Description	Part No.	1 Fan	2 Fan	3 Fan	4 Fan	6 Fan	8 Fan
Common Parts - Condensers and Drycoolers								
1b-4	Constant Speed Motor							
	208 - 460V, 3 Phase	1C124870P1	1	2	3	4	6	8
2-7	Input Fuse Block							
	208 / 230V 3P 30A	E-1020	1	1	1	1	1	1
	460V 3P 30A	E-1050	1	1	1	1	1	1
	Input Fuses							
	208 / 230V 15A	E-2070	3	3	3	3		
	208 / 230V 20A	E-1230					3	3
	460 V 15A	E-2410	3	3	3	3	3	3
Fan Cycling Drycooler & Condenser Only Parts								
2-2	Fan Motor Contactor - 3 Pole 24V Coil	E-0110	1	2	3	3	3	3
Non-Fan Cycling Condenser Only Parts								
3-2	Fan Motor Contactor - 3 Pole 24V Coil	E-0110	1	1	1	1	1	1

Section 4 - Lee-Temp Parts

Receivers - Single Circuit

		Model Numbers					
		Condensers	CSC083L CSL083L CSC104L CSL104L	CSC165L CSC205L CSC251L CSC107C CSL107C CSL165L CSL205L CSL251L	CSC308L CSC330L CSL217C CSL308L CSL330L DCSL276	CSC415L CSL415L	CST480C CST510C
				DCSC119 DCSC127 DCSC179 DCSL127 DCSL179 DCST119	DCSC143 DCSC238 DCSC276 DCSL143 DCSL238 DCSL276 DCST358 DCST477	DCSC214 DCSC286 DCST214 DCST286	DCST409
FN	Part Name and Description	Part No.	1 Fan	2 Fan	3 Fan	4 Fan	8 Fan
1a-1	Receiver	W-0040 (1C19982P1)	1				
		W-0050		1			
		W-0060			1		
		W-0410				1	
		W-1200					1

Receivers - Dual Circuit

		Standard	CDL083L CDL104L CDL107C CDL165L CDL205L CDL251L	CDC415L CDL330L CDC308L CDL217C	CDL480C CDL616L CDL660L	CDL510C CDL830L
		Quiet-line	DCDL063 DCDC119 DCDC127 DCDC179 DCDL238	DCDL143 DCDL238 DCDL358 DCDT214 DCDT276 DCDT477 DCDT286 DCDT358	DCDL286 DCDT409	DCDT572
FN	Part Name and Description	Part No.				
1a-1	Receiver	W-0040 (1C19982P1)	2			
		W-0050		2		
		W-0060			2	
		W-0410				2

Lee-Temp Receiver & Heater Assembly

		Condenser Models	CSL083L CSL104L CDL083L CDL104L	CDL107C CDL165L CDL205L CDL251L	DCDL063 DCSL063 DCDL119 DCDL127	DCDL179 DCDT238
		Chiller Models	CSC083L	CSC104L	DCSC063	
		Receiver	W-0040			
		Heaters	1 (150W)		2 (300W)	
		Volts	120V	230V	120V	230V
FN	Part Name and Description	Part No.				
	Complete Lee-Temp Assembly	067-2590	1			
		067-2600		1		
		067-2680			1	
		067-2690				1
		9A31806G1	1			
		9A31810G1		1		
		9A31814G1			1	
		9A31818G1				1

		Condenser Models	CSL107C CSL165L CSL205L CSL251L DCSL127	DCSL179 DCST119 CDL415L CDL330L CDL308L	CDL217C DCDL143 DCDL238 DCDL358 DCDT214	DCDT 276 DCDT477 DCDT286 DCDT 358
		Chiller Models	CSC165L CSC205L	CSC251L CSC107C	DCSC119 DCSC127	DCSC179
		Receiver	W-0050			
		Heaters	1 (150W)		2 (300W)	
		Volts	120V	230V	120V	230V
FN	Part Name and Description	Part No.				
	Complete Lee-Temp Assembly	067-2610	1			
		067-2620		1		
		067-2700			1	
		067-2710				1
		9A31807G1	1			
		9A31811G1		1		
		9A31815G1			1	
		9A31819G1				1

Note: A Lee-Temp Receiver Assembly includes the items listed in the "Lee-Temp Common Parts" on page 6 plus the following items: Piping Assembly; Electric Connection Box; Insulation and Exterior Wrapper.

Lee-Temp Receiver Assembly, Continued

		Condenser Models	CSL217C CSL308L CSL330L	CDL480C CDL616L CDL660L	DCSL143 DCSL 238 DCSL276 DCST358 DCST477	DCDL286 DCDT409
		Chiller Models	CSC308L CSC330L	CSC 238	DCSC276 DCSC143	
		Receiver	W-0060			
		Heaters	1 (150W)		2 (300W)	
		Volts	120V	230V	120V	230V
FN	Part Name and Description	Part No.				
	Complete Lee-Temp Assembly	067-2630	1			
		067-2640		1		
		067-2720			1	
		067-2730				1
		9A31808G1	1			
		9A31812G1		1		
		9A31816G1			1	
		9A31820G1				1

		Condenser Models	CSL415L	CDL510C CDL830L	DCST214 DCST286	DCDT572
		Chiller Models	CSC415L	DCSC214 DCSC286	DCSC143	
		Receiver	W-0410			
		Heaters	1 (150W)		2 (300W)	
		Volts	120V	230V	120V	230V
FN	Part Name and Description	Part No.				
	Complete Lee-Temp Assembly	067-2840	1			
		067-2850		1		
		067-2800			1	
		067-2810				1
		9A31809G1	1			
		9A31813G1		1		
		9A31817G1			1	
		9A31821G1				1

		Condenser Models	CST480C	CST510C	DCST409	
		Receiver	W-1200			
		Heaters	2 (300W)		4 (600W)	
		Volts	120V	230V	120V	230V
FN	Part Name and Description	Part No.				
	Complete Lee-Temp Assembly	9A31809G1	1			
		9A31813G1		1		
		9A31817G1			1	
		9A31821G1				1

Lee-Temp Common Parts

FN	Part Name and Description	Part No.	W-0400	W-0050	W-0060	W-0410	W-1200
Common Parts - Lee Temp Receiver Assembly							
4-1	Sight Glass	127997P1	2	2	2	2	4
4-2	Relief Valve	123900P1	1	1	1	1	2
4-3	Check Valve	W-0090	1	1	1	1	1
4-4	Roto Lock Adapter	W-0110	1	1	1	1	2
4-7	Heater Pad 120V	1D26836P1	*	*	*	*	**
	Heater Pad 230 V	1D26836P2	*	*	*	*	**
4-5	Head Pressure Valve	W-0340	1	1	1	1	1
	Receiver Inlet Seal	W-0330	1	1	1	1	2
	Receiver Outlet Seal	W-0330		1	1	1	2
	Receiver Outlet Seal	W-0320	1				
4-6	Roto Lock Valve	W-1000	1				
4-6	Roto Lock Valve	C-0480		1	1	1	2

*150 Watt Qty. = 1, 300 Watt Qty. = 2

**300 Watt Qty. = 2, 600 Watt Qty. = 4

Note: A Lee-Temp Receiver Assembly includes the items listed in the chart above plus the following items: Piping Assembly; Electric Connection Box; Insulation and Exterior Wrapper.

Additional Check Valve for Chiller Models

		Chiller Models	CSC083L CSC104L	DCSC063	CSC165L CSC205L CSC251L CSC107C CSC308L CSC330L CSC415L	DCSC119 DCSC127 DCSC179 DCSC143 DCSC238 DCSC276 DCSC214 DCSC286
FN	Part Name and Description	Part No.				
	Check Valve - 7/8"	W-0090		1		
	Check Valve - 1 1/8"	1C23493P1				1

Section 5 - Common Parts, Condensers and Drycoolers (including Quiet-Line)

FN	Part Name and Description	Part No.	All	208 / 230V	460V	575V	Condensers	Drycoolers
Common Parts - Condensers and Drycoolers								
1b-1	Fan Guard	D67-003B	1 Per Fan					
1b-2	Fan Blade	D67-003A	1 Per Fan					
1b-3	Rain Guard	D-1830	1 Per Fan					
1b-5	Motor Mounting Angle	F67-0280	1 Per Fan					
1b-6	Motor Mounting Angle	F67-0290	1 Per Fan					
1b-7	Motor Mounting Channel	F67-0270	1 Per Fan					
2-1	Circuit Breaker (part of transformer assembly)	E-276C	1					
2-1, 3-2	Control Transformer	E-007A		1				
		E-007B			1			
		E-007C				1		
2-5	Thermostat	E-3080					**	
3-6		E02-0100 (*)						*
2-5	Thermister	G-200A					*	
3-6		G-200B						*

* Single Fan Qty. = 1, Two or More Fans Qty. = 2

** Two Fan Qty. = 1, 3 or 4 Fans Qty. = 2, 6 or 8 Fans Qty. = 4

Section 6 - Condenser / Drycooler Coils

Standard Condenser Coils

FN	Models	CSF	CDF	CSL / CSC / CST	CDL / CDC / CDT
	083L	129564G1		129564G2	
	104C	129566G1	129567G1	129566G2	129567G2
	107C	067-7810	067-7720		
	165L	129568G1	129569G1	129568G2	129569G2
	205L	129570G1	129571G1	129570G2	129571G2
	217C	129590G1	129591G1	129590G2	129591G2
	251L	129572G1	129573G1	129572G2	129573G2
	308L	129574G1	129575G1	129574G2	129575G2
	330L	129576G1	129577G1	129576G2	129577G2
	415L	129578G1	129579G1	129578G2	129579G2
	480C	129582G1	129583G1	129582G2	129583G2
	510C	1D15738G1	1D13506G1	1D15738G2	1D13506G2
	616L		129574G1 (2)		129574G2 (2)
	660L		129576G1 (2)		129576G2 (2)
	830L		129578G1 (2)		129578G2 (2)
	960C		129582G1 (2)		129582G2 (2)
	1010C		1D15738G1 (2)		1D15738G2 (2)

Quiet-Line Condenser Coils

FN	Models	CSL / CSC / CST	CDL / CDC / CDT
	063	129562G2	
	119	129568G1	129569G1
	127	133985G1	
	143		067-4230
	179	129659G1	129573G2
	214		1D35561G1
	238	129576G2	129577G2
	276	129582G2	
	286	1D33845G1	129657G1
	358		129659G1 (2)
	409		1D15882G1 (2)
	477		129576G2 (2)
	572		1D33845G1 (2)

Drycooler Coils

FN	Standard Models	Quite-Line Models	Part No.
	033		1C21753G1
	069	040	1D10088G1
	092	057	1D10092G1
	109	060	1D23788G1
	112		1D23794G1
	139	080	1D10089G1
	174	111	1D10093G1
	197	121	1D10093G1
	225		1D23798G1
	260	158	1D10094G1
	310	173	1D23792G1

FN	Standard Models	Quite-Line Models	Part No.
	350	178	1D23795G1
	352	205	1D13283G1
	419	248	1D13284G1
	466		1D13279G1
	491		1D13280G1
	620	347	1D16041G1 (2)
	650		1D16042G1 (2)
	700	356	1D16044G1 (2)
	790	453	1D15889G1 (2)
	880		1D15877G1 (2)
	940	498	1D15730G1 (2)

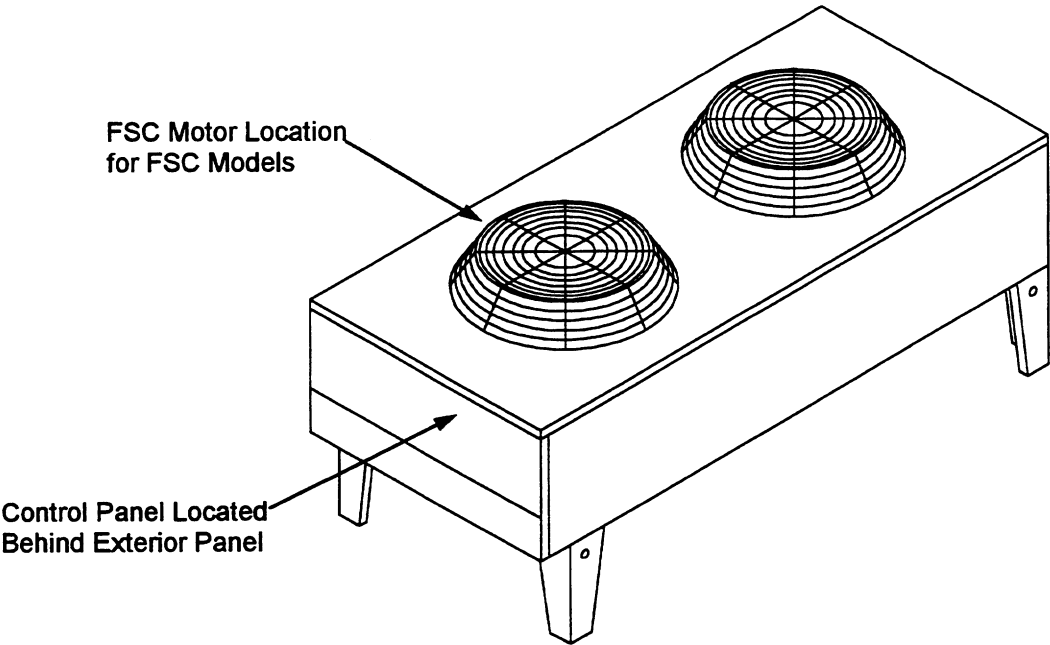
NOTE: These part numbers apply to standard drycooler coils. If your drycooler model number ends in numbers rather than a letter, make sure your Liebert supplier knows you have a special coil with internal circuits selected to meet your application.

Section 7 - Pump Controls

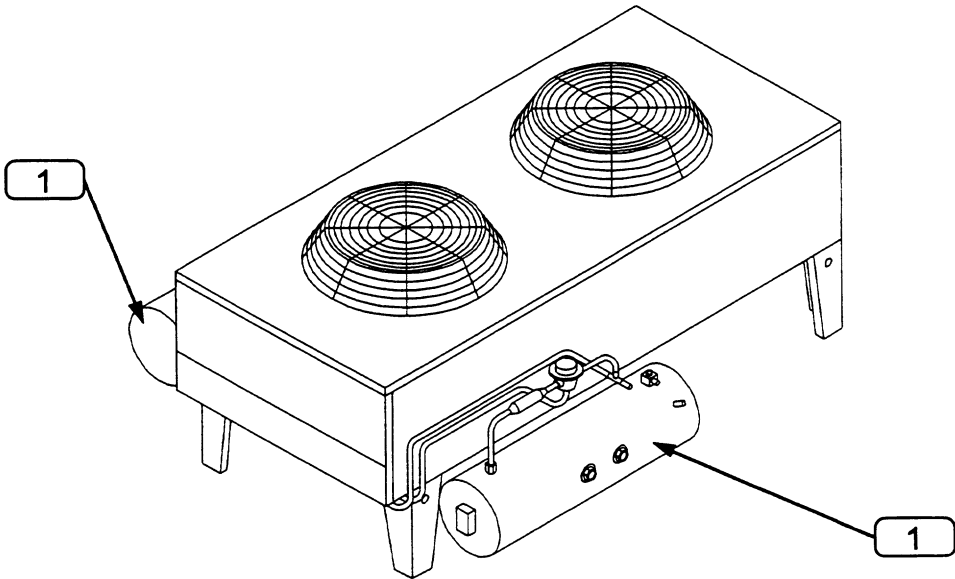
		Drycooler Model Numbers						
		Standard	033 069 092 112	139 174 197 225	260 310 350	352 419 466 491	620 650 700	790 880 940
		Quiet-Line	040 057 060	080 111 121	158 173 178	205 248	347 356	453 498
FN	Part Name and Description	Part No.	1 Fan	2 Fan	3 Fan	4 Fan	6 Fan	8 Fan
Pump Controls - Drycoolers								
3-4	Contactor - 24V Coil							
	DSF - Single Pump, 2 Pole	E-011A	1					
	DSF - Single Pump, 3 Pole	E-0110	1					
	DSO - Single Pump, 3 Pole	E-0110	1					
	DSO - Single Pump, 3 Pole	E-009F		1	1	1	1	1
	DDO - Dual Pump, 3 Pole	E-0110		2	2	2	2	2
3-7	Overload Block - 3 Pole	E-009G	1 / Pump	1 / Pump	1 / Pump	1 / Pump	1 / Pump	1 / Pump
3-5	Input Fuse Block							
	208 / 230V 3P 30A	E-1020	1 / Pump	1 / Pump	1 / Pump	1 / Pump	1 / Pump	1 / Pump
	460 / 575V 3P 30A	E-1050	1 / Pump	1 / Pump	1 / Pump	1 / Pump	1 / Pump	1 / Pump
3-12	Disconnect Switch 208 / 230V	1C23551P1	1					
		1C23551P2		1	1	1		
		1C23551P3					1	
		1C23551P4						1
3-12	Disconnect Switch 460 / 575V	1C23551P1	1	1	1	1		
		1C23551P2					1	1
Pump Controls - DDO Dual Pump								
3-11	Time Delay Relay	E-3530	1	1	1	1	1	1
	Toggle Switch (PS)	E-3490	1	1	1	1	1	1
3-10	Relay (R2, AL)	E-0130	2	2	2	2	2	2
	Flow Switch	P-4620	1	1	1	1	1	1

Section 8 - Pump Packages

FN	Part Name and Description	Part No.	¼ HP	1.5 HP	2.0 HP	3.0 HP	5.0 HP	7.5 HP
	Pump 208 /230V 1 ø	P13-0030	1					
	Pump 208 / 230 / 460V 3 ø	P02-0340	1					
		P-281A		1				
		P-381B			1			
		P-296A				1		
		P02-001A					1	
		P02-0280						1
	Pump 575V	P02-0350	1					
		P-281B		1				
		P-381C			1			
		P-296B				1		
		P02-001B					1	
		1D18257P1						1
3-7	Overload Heaters 208/230V	E-0880	3					
		E-0910		3				
		E-1810			3			
		E-0960				3		
		E-2670					3	
		E-2700						3
	Overload Heaters 460V	E-0830	3					
		E-2610		3				
		E-0880			3			
		E-2660				3		
		E-0950					3	
		E-0960						3
	Overload Heaters 575V	E-3330	3					
		E-1840		3				
		E-2610			3			
		E-0880				3		
		E-9030					3	
		E-9060						3
3-5	Fuses 208/230V	E-2070	3	3	3	3		
		E-2080					3	
		E-2100						3
	Fuses 460V	E-2410	3	3	3	3	3	
		E-2730						3
	Fuses 575V	E-2410	3	3	3	3	3	3



2 Fan Condenser / Drycooler



2 Fan Condenser with Lee-Temp

Figure 1a - Typical Figures of Condensers and Drycoolers

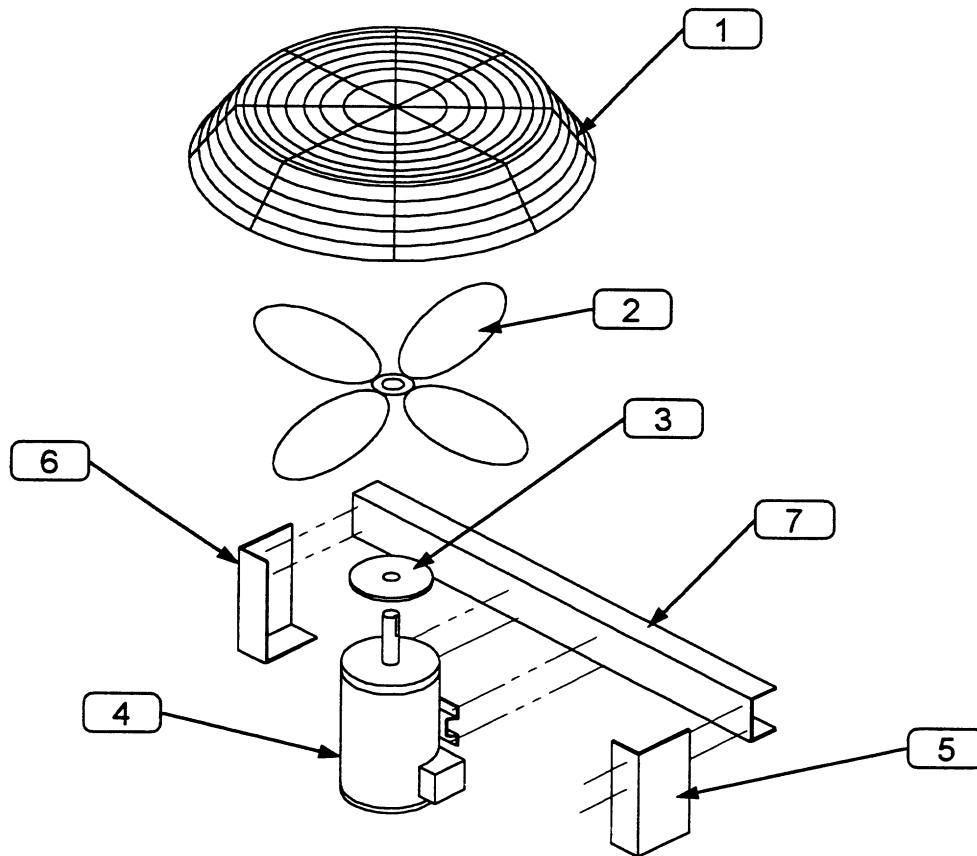


Figure 1b - Typical Fan and Motor Arrangement

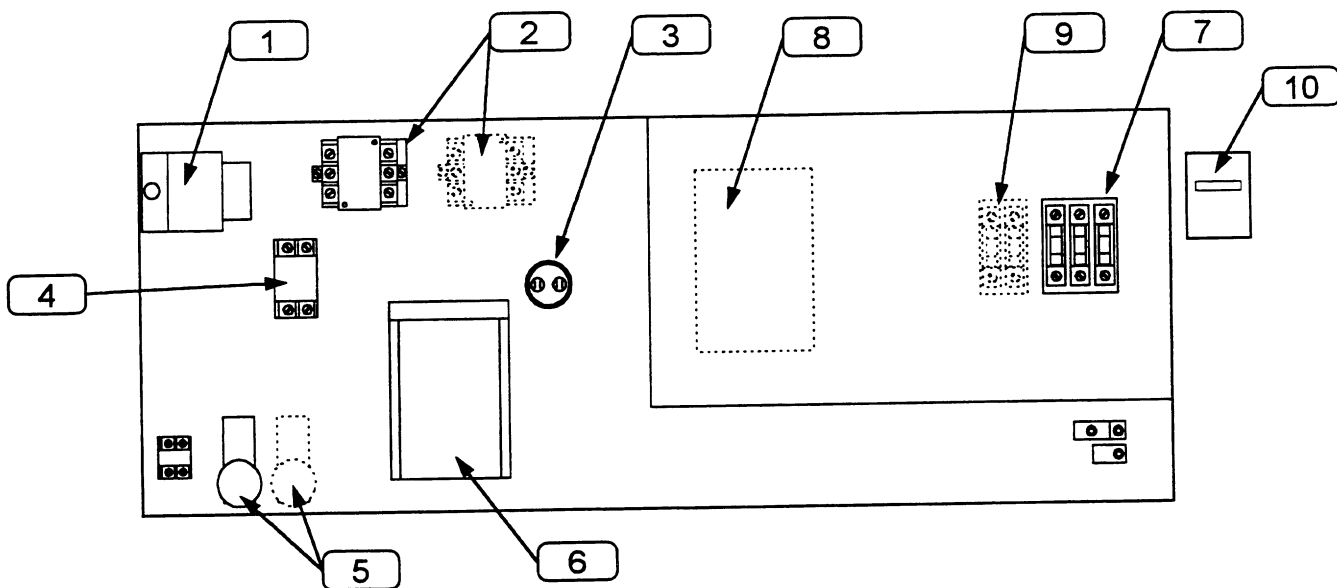


Figure 2 - Fan Speed Control Panel (Dashed Items Are Optional)

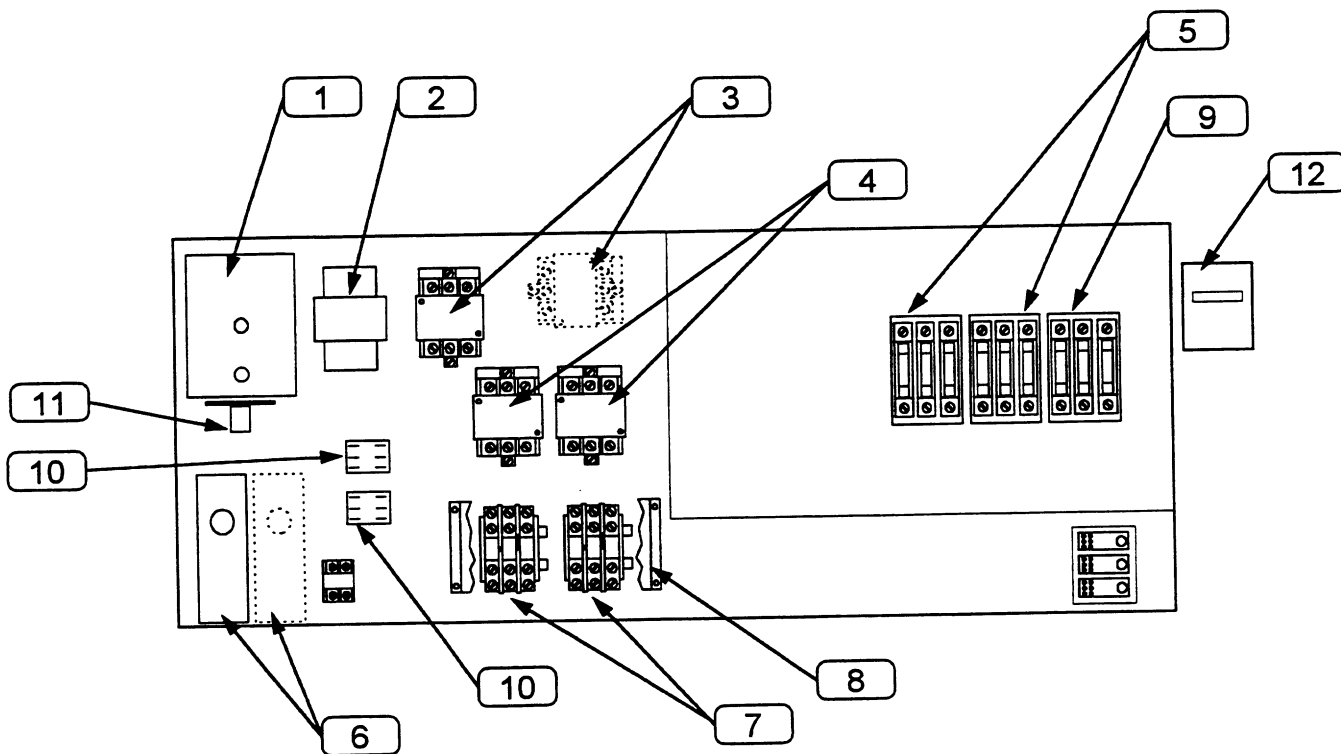


Figure 3 - Dual Pump Drycooler Control Panel (Dashed Items Are Optional)

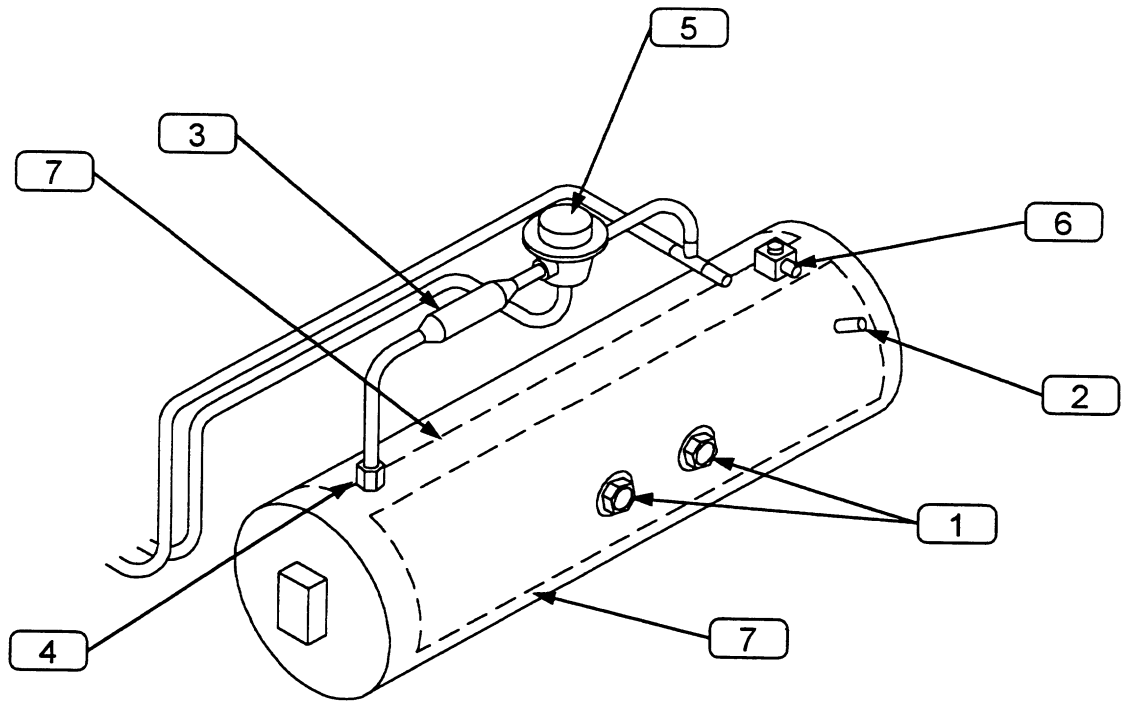


Figure 4 - Lee-Temp Receiver

1. The first part of the document is a list of the names of the persons who have been appointed to the various offices of the city of New York.

A World Leader in Computer Support Systems

Environmental Control • Power Protection • Site Monitoring/Control

Service • Parts • Training

Liebert Corporation designs, manufactures, and markets complete systems for improvement of computer uptime and performance. The result is improved business operations, increased productivity and higher return on the computer investment. Liebert Systems provide dependable environmental control, electrical power protection, centralized monitoring and control, and remote monitoring. Liebert supports its products with a combination of preventive maintenance, emergency repairs, depot repairs, parts, technical assistance, and training. This approach represents a single-source integrated computer support network.

Based on over three decades of experience and more than 500,000 installations worldwide, Liebert is committed to offering the highest quality products and services for applications requiring computer support.



Liebert Corporation

1050 Dearborn Drive
P.O. Box 29186
Columbus OH 43229
Telephone: 614.888.0246
Facsimile: 614.841.6022

Liebert Europe

Elgin Drive
Swindon
Wiltshire SN2 6DX
United Kingdom
Telephone: 441.793.553.355
Facsimile: 441.793.553.400

While every precaution has been taken to ensure accuracy and completeness in this manual, Liebert Corporation assumes no responsibility, and disclaims all liability for damages resulting from use of this information or for any errors or omissions.

©1996 Liebert Corporation All rights reserved throughout the world. Specifications subject to change without notice.

©Liebert and the Liebert logo are registered trademarks of Liebert Corporation.

Printed in U.S.A.
SL-10090 (1/96) (60)

